



# Year 3 Geography - How and why is my local area changing?



*Glenridding in Cumbria*

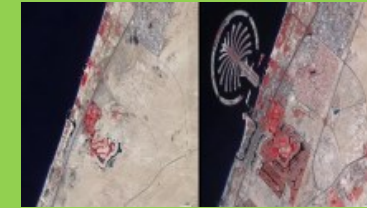


*Olympic stadium and park, London - before and after development*

## Important locations



*Aral sea - before and after water extraction for irrigation*



*Dubai development in the last 20 years.*



*Deforestation in Maranhao, Brazil*

*My school - St Margarets Academy,*

*Torquay and its locality.*



## Key knowledge and understanding

- The difference between physical and human processes and events that affect environments.*
- How the environment of my school and grounds has changed over time.*
- Why locations in the local area of the school have changed.*
- That there are often different views about whether environmental change is a positive thing.*
- How the quality of the environment varies in the local area surrounding my school.*
- How and why environments are changing at different locations around the world.*
- How environmental change on a global scale affects our lives locally.*
- How humans behave locally can contribute to global changes such as climate change.*



# Year 3 Geography - How and why is my local area changing?



## Key vocabulary

**Pattern** - how objects are arranged on the Earth's surface.

**Pollution** - something added to the environment that is harmful to living things.

**Flash flood** - sudden flooding that happens when rivers rise quickly with no warning after heavy rainfall.

**Deforestation** - cutting down huge areas of woodland to use the land for other purposes.

**Natural disaster** - a catastrophic event caused by a natural process that affects people and property.

**Residential** - areas where most of the land is occupied by people's homes.

**Commercial** - something involving making products or providing services to make money.

**Recreation** - activities people choose to do to help them relax or have fun.

**Leisure** - any activity someone chooses to do in their own free time.

**Public service** - something provided by the government for the benefit of the people.

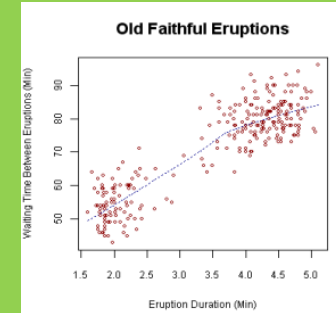
**Hypothesis** - an idea, question or theory that can be investigated to see if it is true or not.

**Accessibility** - how easily and quickly a place can be reached.

**Correlation** - a way of finding out how closely related two sets of data are.

**Redevelopment** - demolishing derelict buildings and replacing them with modern homes, businesses and facilities.

## Statistical techniques - Scatter graphs and correlation



## Physical processes - Flash flooding



## Human processes - Deforestation

