

SAMSUNG

User Manual

Table of contents

Getting started

- 3 About this manual
- 7 Layout
- 13 Turning the computer on and off

Basics

- 16 Using the keyboard
- 18 Using the touchpad
- 20 Memory card slot
- 22 Wireless LAN
- 23 Using the security slot

Chrome OS

- 24 Using applications
- 24 All about Chrome OS
- 26 Get on the web
- 28 Discover web apps
- 29 Using Play Store
- 30 FAQ
- 30 Recovery (optional)

Settings & Upgrade

- 32 LCD brightness
- 33 Volume
- 34 Battery

Appendix

- 36 Product specifications
- 37 Ergonomic tips
- 41 Safety precautions
- 51 Important safety information
- 54 Replacement parts and accessories
- 57 Regulatory compliance statements
- 65 WEEE symbol information
- 67 Samsung package Take-Back program (USA only)

Getting started

About this manual

- This user manual is specially designed to detail the computer's functions and features.
- The user manual supplied with the computer may vary depending on the model.
- Please read this manual before using the computer to ensure safe and proper use.
- Optional accessories, some devices, and software referred to in this manual may not be provided or may not be subject to upgrades. Note that the computer environment referred to in the user manual may not be the same as your environment.
- Available features and additional services may vary depending on the computer or operating system.
- This user manual describes procedures for using the touchpad, mouse and touch screen. Instructions for using the touch screen are for models with the touch screen feature.

- Images and screenshots are those of the representative model of the series and may differ in appearance from the actual product.
- Content may differ from the final product and is subject to change without prior notice. For the latest version of the manual, refer to the Samsung website, www.samsung.com.

Instructional icons and expressions



Warning: situations that could cause injury to yourself or others



Caution: situations that could cause damage to the computer or other equipment



Note: notes, usage tips, or additional information



The path you should follow to carry out an instruction. For example, "select **Settings** → **Devices**" indicates that you should select **Settings** and then **Devices**.

Select Click the mouse or tap the touchpad or touch screen.

To service your computer

For inquiries about the Chrome operating system or applications, visit www.google.com/support/chromeos.

If you have a problem while using the Chromebook hardware, please contact our Customer Care Center below or visit www.samsung.com/sec/support/guarantee.do.

If you replace or upgrade the hardware yourself, the Chrome operating system will not be automatically updated and the product will not work properly.

Copyright

Copyright © 2019 Samsung Electronics Co., Ltd.

This manual is protected under international copyright laws.

No part of this manual may be reproduced, distributed, translated, or transmitted in any form or by any means, electronic or mechanical, including photocopying, recording, or storing in any information storage and retrieval system.

Computer specifications or the contents of this manual may be changed without prior notice due to an upgrade of the computer's functions.

Trademarks

- Samsung and the Samsung logo are trademarks or registered trademarks of Samsung Electronics Co., Ltd.
- Bluetooth® is a registered trademark of Bluetooth SIG, Inc. worldwide.



- Wi-Fi®, Wi-Fi Direct™, Wi-Fi CERTIFIED™, and the Wi-Fi logo are registered trademarks of the Wi-Fi Alliance.
- All other trademarks and copyrights are the property of their respective owners.

Chrome OS Software License

The software included in this product contains copyrighted software that is licensed under the GPL/LGPL.

You may obtain the complete Corresponding Source code from website: <http://git.chromium.org/gitweb/>

This offer is valid to anyone in receipt of this information.

As an ENERGY STAR® Partner, Samsung has determined that this product meets the ENERGY STAR® guidelines for energy efficiency.



- The ENERGY STAR Program has reduced greenhouse gas emissions and saved energy through voluntary labeling.
- Power management setting of this product has been enabled by default, and has various timing settings from 1 minute to 5 hours.
- The product can wake with a button press on the chassis from sleep mode.

Precautions for Operating System Support

If a problem occurs because of the reinstallation of other operating systems(OS) or a previous version of an OS pre-installed on this computer, or a software that does not support the OS, the company will not provide technical support, a replacement or refund, and if our service engineer visits you due to this problem, a service charge will be applied.

Performance Restrictions

Online games and some games(3D, 2D) may not be supported and Full HD video and some high bit rate HD video playback may be slow and stutter on this computer.

About the Product Capacity Representation Standard

About Memory Capacity Representation

The memory capacity reported in the Chrome OS is less than the actual capacity of memory.

This is because BIOS or a video adapter uses a portion of memory or claims it for further use.

(E.g. For 1 GB(=1,024 MB) memory installed, OS(Windows, Chrome, etc.) may report the capacity as 1,022 MB or less)

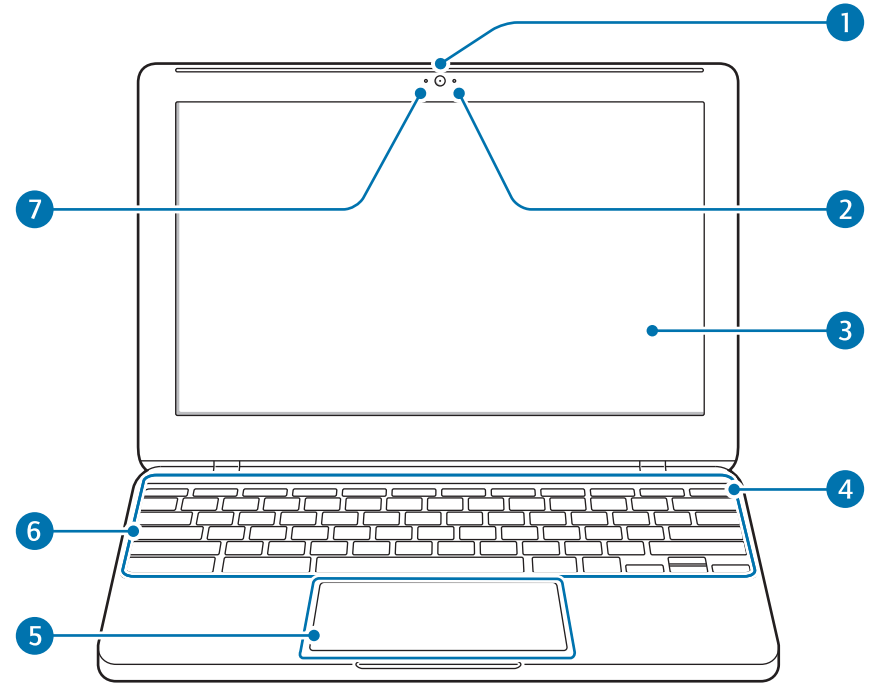
Layout



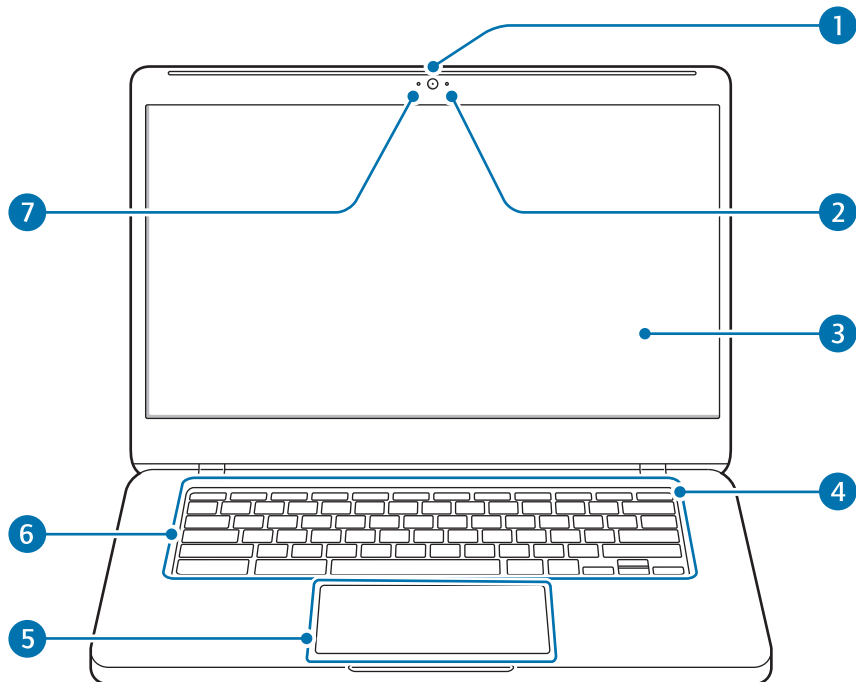
- Features or options may differ depending on the model.
- The items marked as optional may not be provided or may be provided in different locations.
- Since some storage space is reserved for system recovery and operations, the available storage space may be less than the actual capacity.


Front view

► For 11.6 inch models



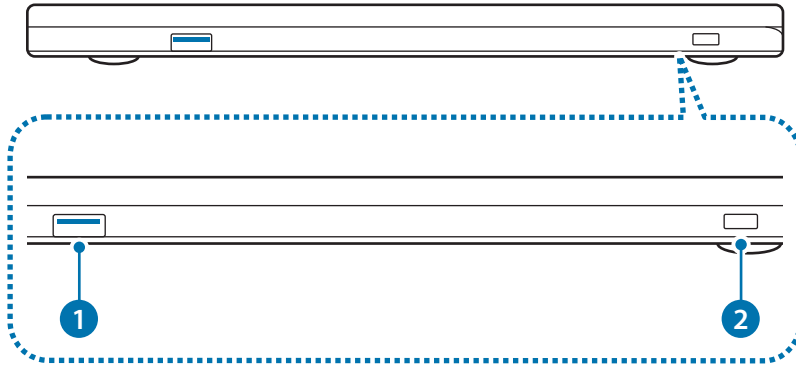
► For 15.6 inch models




Number/Name	Description
1 Camera	<ul style="list-style-type: none">Using this camera, you can take still pictures and record video.
2 Microphone	<ul style="list-style-type: none">You can use the built-in microphone.
3 LCD	<ul style="list-style-type: none">The screen's images are displayed here.
4 Power button 	<ul style="list-style-type: none">Turns the computer on and off.
5 Touchpad	<ul style="list-style-type: none">Moves the cursor and selects options.Functions as a mouse.
6 Keyboard	<ul style="list-style-type: none">Enter text or control computer functions.
7 Camera indicator light	<ul style="list-style-type: none">This indicates the camera operating status.

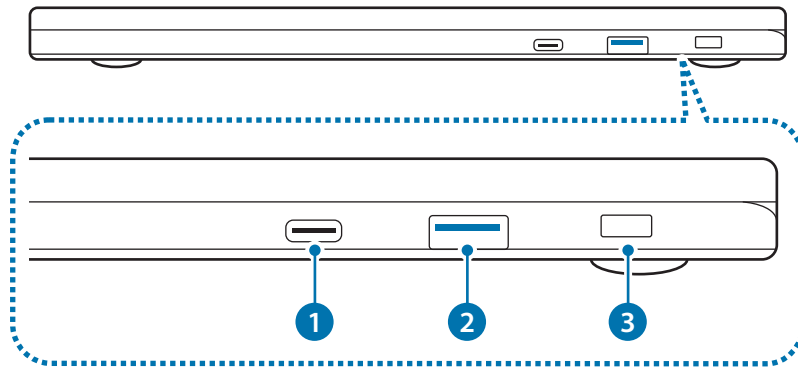
Right view


► For 11.6 inch models



Number/Name	Description
1 Chargeable USB 3.0 port	<ul style="list-style-type: none">Connect a USB device to the computer and charge the connected USB device.  Data transfer speeds can vary among different USB devices and system configuration.
2 Security slot	<ul style="list-style-type: none">Secure the computer by connecting an optional lock and cable to it.

► For 15.6 inch models



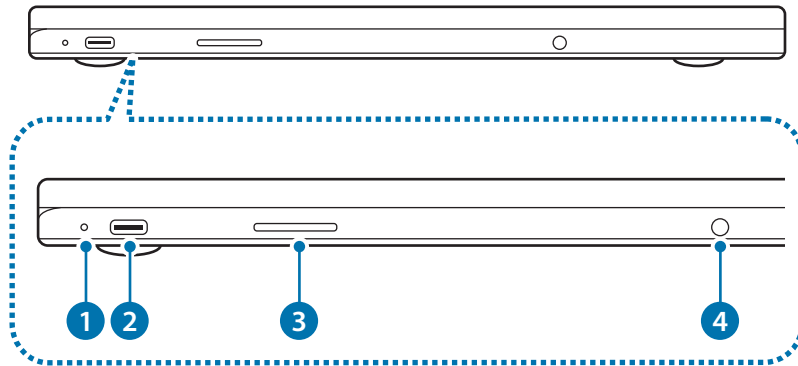
Number/Name	Description
1 USB-C® port	<ul style="list-style-type: none"> Connect and charge a USB-C® device, or connect to an external display device.
2 Chargeable USB 3.0 port	<ul style="list-style-type: none"> Connect a USB device to the computer and charge the connected USB device. <p> Data transfer speeds can vary among different USB devices and system configuration.</p>
3 Security slot	<ul style="list-style-type: none"> Secure the computer by connecting an optional lock and cable to it.

About the chargeable USB port

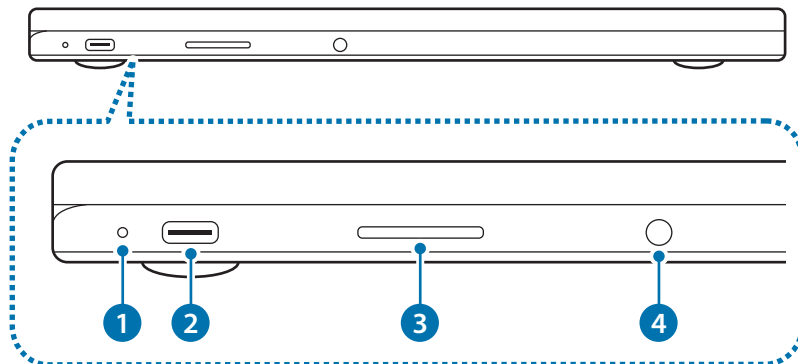
- It may take longer to charge the battery when charging a USB device.
- The battery power level may be reduced when charging a USB device while the computer is powered by the battery.
- The charging status of the USB device is not displayed on the computer.
- This feature may not be available on some USB devices.
- When the computer is turned off, the device connected to the USB port is not charged.

Left view

► For 11.6 inch models



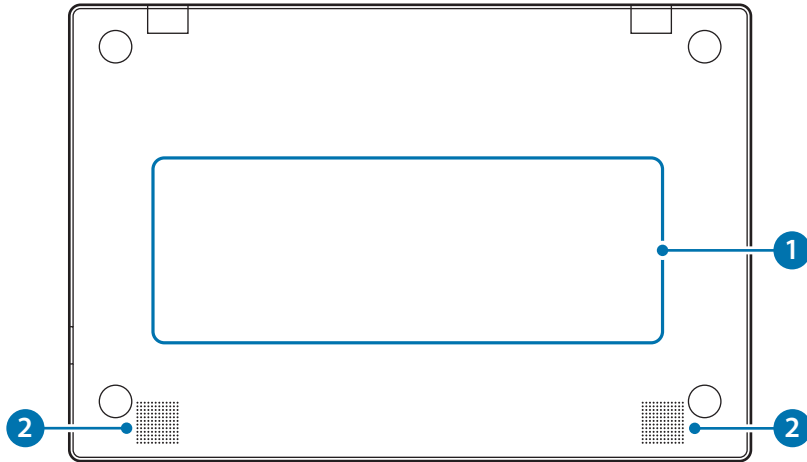
► For 15.6 inch models



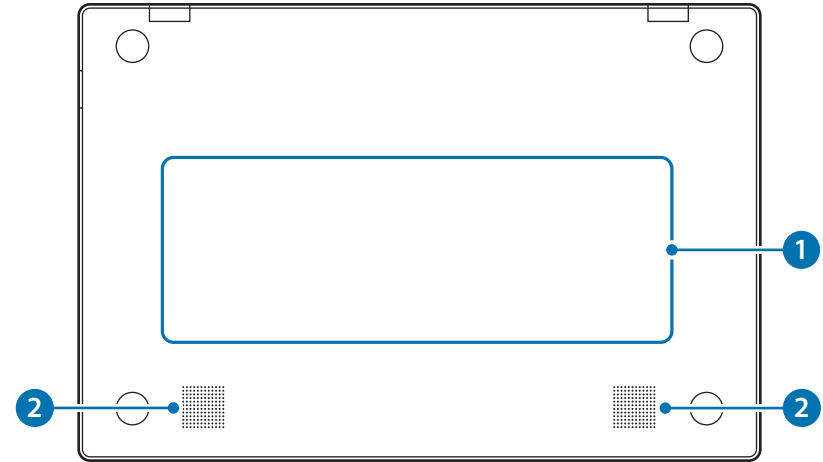
Number/Name	Description
1 Operating status LED	<ul style="list-style-type: none"> Shows the operating status of the computer. <ul style="list-style-type: none"> Blinks red: Pre-charging Red: Charging Green: Fully charged Blue: Turned on
2 USB-C [®] port	<ul style="list-style-type: none"> Connect and charge a USB-C[®] device, or connect to an external display device.
3 Memory card slot (optional)	<ul style="list-style-type: none"> Insert a memory card into the slot.
4 Earpiece/ Headset jack	<ul style="list-style-type: none"> Connect an earpiece or a headset to the computer to listen to audio.

Bottom view

► For 11.6 inch models



► For 15.6 inch models



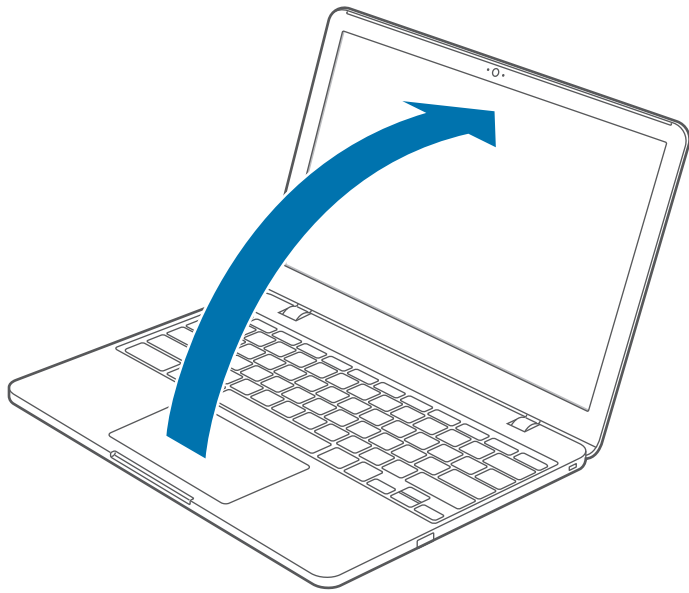
Number/Name	Description
1 Internal battery	<ul style="list-style-type: none">• Provides power to the computer when not connected to an AC adapter.• To remove or replace the internal battery, take it to a Samsung Service Center. You will be charged for this service.
2 Speaker	<ul style="list-style-type: none">• Sound is emitted from the speakers.

Turning the computer on and off

 Fully charge the battery using the AC adapter before using the computer **for the first time**.

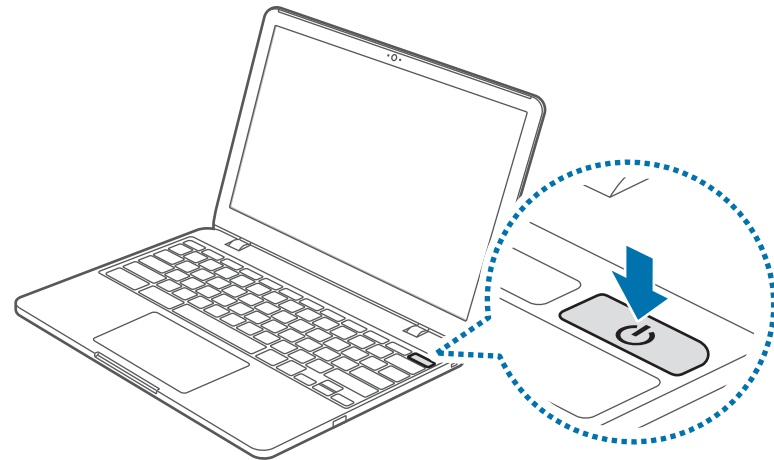
Turning the computer on

- 1 Before turning on the computer, check that the battery is charged and charge it if necessary.
- 2 Open the LCD panel.



- 3 The computer turns on automatically when the LCD panel is opened.

If the computer does not turn on automatically, press the Power button.



Turning the computer off

Using screen buttons

- 1 Select the taskbar on the bottom right.
- 2 Select Power button (⏻).



- Save all data before turning off the computer.
- **If the screen is locked in power saving mode**
Click on the screen, tap the touchpad, or press any key to unlock the screen.

Using the Power button

Press and hold the Power button for about 8 seconds to shut down the Chromebook.

Press and hold the Power button for about 2 seconds to access additional options.

In the lock state, press and hold the Power button for about 2 seconds to shut down the Chromebook.

To shut down the Chromebook when the system has frozen unexpectedly, press and hold the Power button for at least 8 seconds.

Controlling the power of the Chromebook

	If the LCD is closed	When there is no input for a predetermined period of time	If the Power button is pressed
Signed-in state	Enters power saving mode	Enters power saving mode	The state changes to the sign out state
Signed-out state	The computer is turned off	The computer is turned off	The computer is turned off



Click on the screen, tap the touchpad, or press any key to unlock the screen.

Basics

Using the keyboard



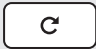








Shortcut key functions and procedures are discussed in the following sections.



- The keyboard image may differ from the actual keyboard.
- The keyboard may differ depending on your country. The following mainly describes the shortcut keys.

Shortcut Keys

Here is an overview of the shortcut keys on the top row of the keyboard.

Shortcut Keys	Description
	• Go to the previous page in your browser history.
	• Go to the next page in your browser history.
	• Reload your current page.
	• Hide the tabs in full-screen Immersive mode.
	• Enter Overview mode, which shows all windows.
	• Decrease screen brightness.
	• Increase screen brightness.
	• Mutes the sound. In Mute mode, press the  key to cancel the Mute function.
	• Decrease the volume.
	• Increase the volume.

Shift key

Hold the **Shift** key down to enter upper case letters.



Hot key function

Press the following keys at the same time.

You can check the hot keys in Chrome OS.



Search key

Where you'd find the **Caps Lock** key on a traditional keyboard, we've put the **Search** key.



Press the **Search** key to run the Launcher.

If you really need **Caps Lock**, go to the Settings page to make the **Search** key behave like a **Caps Lock** key.

Using the touchpad

Use the touchpad to move the cursor or select an item. The left and right buttons of the touchpad act the same as the left and right buttons of a mouse.

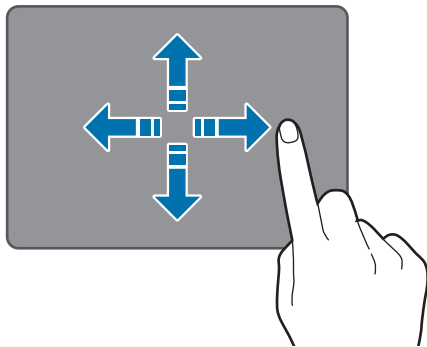


- Use the touchpad only with fingers. The touchpad will not recognize actions of other objects.
- Images and the touchpad layout may differ depending on the model.

Basic touchpad functions

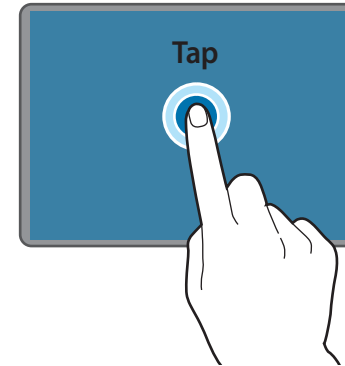
Moving

To move the cursor, move a finger on the touchpad.



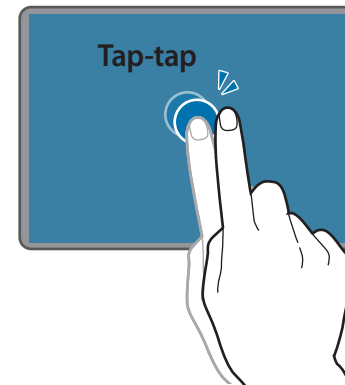
Clicking

Tap the touchpad.



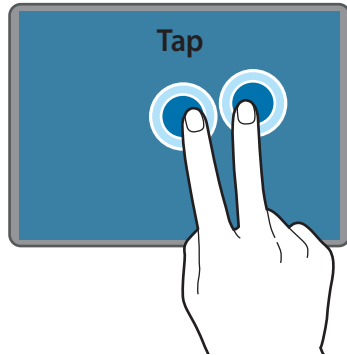
Double-clicking

Double-tap the touchpad.



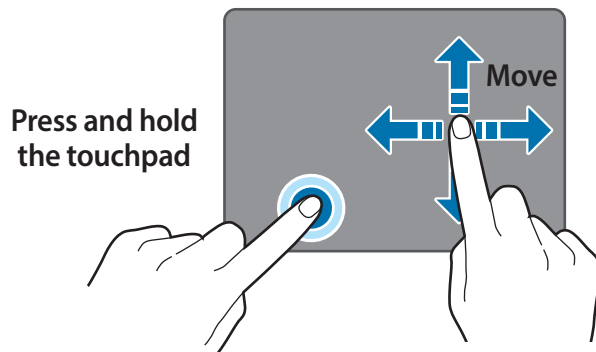
Right-clicking

To right-click, place two fingers on the touch area and tap once.



Dragging

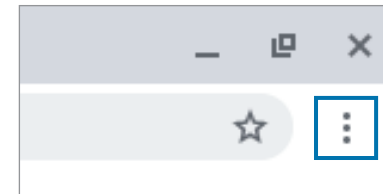
To move an icon or an app tile to a desired location, press and hold it and then drag it to the target position.



Adjusting your Touchpad Settings

If your touchpad is too sensitive, you can adjust your settings by following these steps:

- 1 Click the list icon  on the top-right corner of your browser.



- 2 Select **Settings**.
- 3 Go to **Device** → **Touchpad** → **Touchpad speed**, and change the settings as appropriate.

Memory card slot

Use a memory card to transfer data to other devices, such as digital cameras or MP3 players. Memory cards are sold separately. Purchase a memory card with the necessary capacity for the requirement.

This computer supports the following types of memory cards.

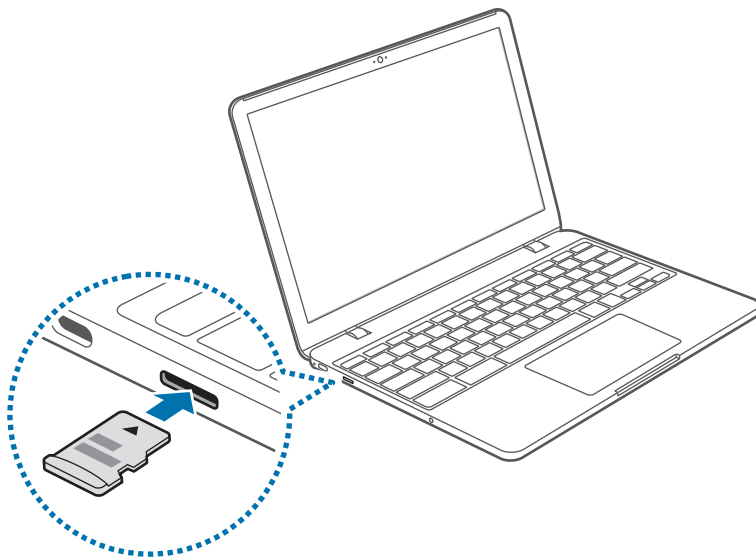
Abbreviation	Description
micro SD	• micro Secure Digital
micro SDHC	• micro Secure Digital High Capacity
micro SDXC	• micro Secure Digital eXtended Capacity



- Some memory cards may not be fully compatible with the computer. Using an incompatible card may damage the computer or the memory card, or corrupt the data stored in it.
- Use caution to insert the memory card in the indicated direction.
- Store the card separately to prevent losing the card when moving the computer.
- Memory card speeds vary.

Inserting a memory card

- 1 If a dummy card or a memory card adapter is inserted in the memory card slot, remove it.
- 2 Insert a memory card into the memory card slot in the indicated direction until it clicks.




- 3 When a pop-up window appears, select it. The **Files** app will launch.
- 4 Click on a file to read the data for the file.

Removing a memory card

Push the card gently until it disengages from the memory card slot. Grasp the end of the card and pull it out of the slot.



- Available data formats depend on the current version of the Chrome operating system.
- Data on the card can be saved in the **Downloads** folder under  → **Files**.
- The maximum file size will vary depending on Chrome OS.

Wireless LAN

Connect the computer to a wireless network to use the Internet.



The descriptions below are for computer models with a Wireless LAN card or device. A Wireless LAN device is optional. The pictures in this manual may differ from the actual product depending on the wireless LAN device model.

About Access Point (AP)

An Access Point (AP) is a network device that bridges wired and wireless LANs and corresponds to a wireless hub in a wired network. Multiple devices can be connected to an AP.

Connecting to a Wi-Fi network


1 Select the taskbar on the bottom right.

2 Select  **No networks** or  **No networks**, and then tap the **Wi-Fi** switch to activate.


The Wi-Fi list will appear.



3 Select a network from the list of detected Wi-Fi list.

4 If the connection is successfully established, the network icon  is displayed.

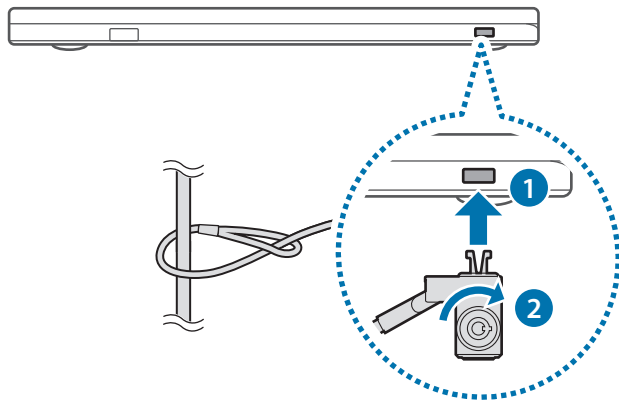


- If the network is not properly connected, it is represented as .
- The icon's fullness represents the signal strength of the wireless LAN.

Using the security slot

You can secure the computer by connecting a lock and cable to the security slot.

Tie the lock and cable to a fixed object and install the other end of the cable to the security slot.



To use this feature, you must purchase a lock and cable (sold separately). Your product may differ from the one shown above. For more information, refer to your lock's manual.

Chrome OS

Using applications



- Images and features may differ depending on the model and the application version.
- Some applications may not be supported depending on the model.
- **Third-party software related services**
For descriptions about and service requests for third-party applications, please contact the relevant manufacturer. Some troubleshooting actions in response to service requests may not work depending on the application manufacturer.


All about Chrome OS

Your Chromebook runs the Chrome operating system that's built and optimized for the web. Using your Chromebook is as easy as surfing the web.

- **Quick access to the web.**

Chromebooks boot quickly after start-up and resume instantly from power saving mode. Your favorite websites load quickly and run smoothly, with full support for the latest web standards and Adobe Flash. The best part: Chromebooks not only stay fast, but are designed to get faster over time as updates are released.

- **Same experience everywhere.**

All your apps, documents, and settings are synced to your account and stored in the cloud. To customize the data that gets synced, select the taskbar on the bottom right and select  → **Sync** under **People**.

- **Always connected.**

Now, you can stay online at home, outdoors, or on your morning commute because your Chromebook makes it easy to get online anywhere, anytime, via Wi-Fi and, if included, mobile broadband service.

- **Built-in security.**

Your Chromebook is much safer than a regular computer. Each webpage and application you visit runs in a restricted environment. So if you visit an infected page, it can't affect the other tabs, apps, or anything else on your computer.

- **Less updating. More surfing.**

When you turn your Chromebook on, it updates itself. Automatically. All of your apps stay up-to-date, and you get the latest and greatest version of the operating system without having to think about it. Starting now, say goodbye to annoying update prompts.

For more information, visit the Help Center at www.google.com/support/chromeos.

Usage Precautions

- Some functions and screenshots are subject to change depending on the Chrome version.
- To sign-in, you need a Google account. If you do not have a Google account, you can create one or connect with a guest account. Some functions may not be available when signed in as a guest.
- You may experience limitations using the product under the following circumstances. Please refer to the link.
 - When reading from or writing to external storage devices with the filing system. (<https://support.google.com/chromebook/answer/183093?hl=en>)
 - When playing certain local video or music files. (<https://support.google.com/chromebook/answer/183093?hl=en>)
 - When using a local printer. (https://support.google.com/chromebook/answer/7225252?hl=en&ref_topic=3399712)
- For additional inquiries about the Chrome operating system or applications, visit <https://support.google.com/chromebook>.
- If you have a problem while using the Chromebook hardware, please visit www.samsung.com/sec/support/guarantee.do.

Get on the web

Logging in with your Google account

You can use your Chromebook when it is connected to the internet. To login, you need a Google account.

If you don't have a Google account, create an account.



The setup process may be different depending on the OS version being used.

1 Activating the computer.

1-1. Select **Let's go**.

1-2. Select a Wi-Fi network and connect to it. Detected networks are automatically listed in the **Connect to network** menu.

1-3. Read and agree to the terms and conditions and select **Accept and continue**.

1-4. Enter your Google ID and password, then click **NEXT**.



If you do not have a Google Account, you can login as a "Guest" by clicking **Browse as Guest**. Note that there are some restrictions in place while using Chrome OS as "Guest".

1-5. Follow the on-screen instructions to proceed the setup.

2 Get started with your Chromebook.

When your Chromebook starts for the first time, updates may be performed for up to 5 minutes during the activation step.

Desktop

When you have completed the login, the Desktop appears. Select the icons on the taskbar to launch various apps. You can also check your notifications and personalize your computer even more by configuring various settings.





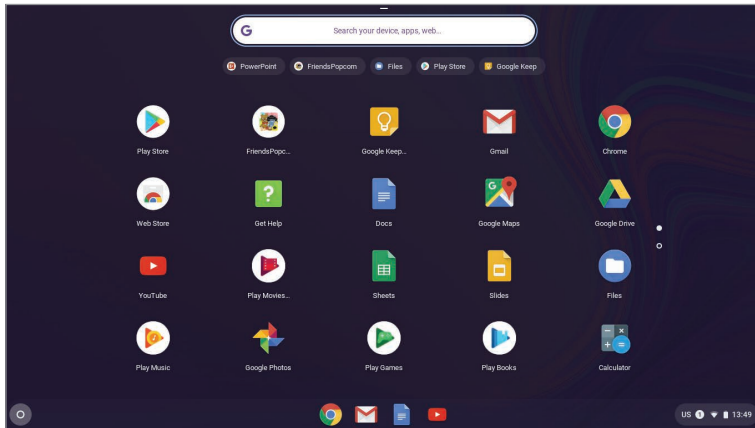
Launcher

Notifications

Launcher

You can search for and launch various apps on the Launcher.

On the Desktop, select  to run the Launcher. Select  to display icons for all your apps, including newly installed apps.

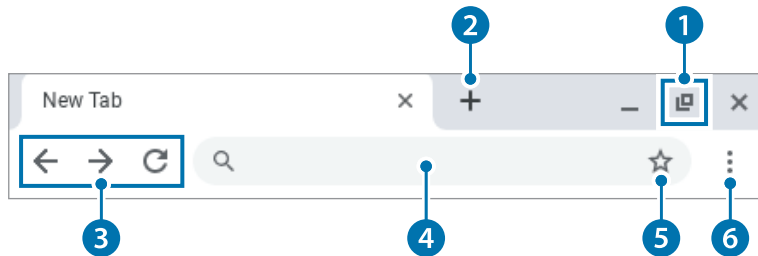


Number/Name	Description
1 Resizing button	<ul style="list-style-type: none"> Minimize the window or move it to the left or right.
2 New tab button	<ul style="list-style-type: none"> Click to see your apps and most visited sites.
3 Navigation buttons	<ul style="list-style-type: none"> Go back, forward, or reload your page.
4 Address bar	<ul style="list-style-type: none"> Search or enter a web address.
5 Bookmark	<ul style="list-style-type: none"> Bookmark the page.
6 Setting	<ul style="list-style-type: none"> Click to adjust your browser settings.

To learn about using the browser, visit the Help Center at <https://support.google.com/chromebook>.

The browsing interface

Once you're signed in, you're instantly on the web. Here's a quick overview of the interface you'll see:



Discover web apps

Want to edit a photo, listen to music, or play games in your browsers? The Chrome Web Store offers a wide range of apps, games, extensions, and themes that you can use to customize your browser.

- **Extensions** are custom features and functionality that you can add to the browser.
- **Themes** change the skin of the browser, to give it a bit more style and flair.
- **Apps** can offer powerful functionality that you'd expect from desktop programs.
- **Games** lets you enjoy various games.

Items you installed are automatically synced to your account, so you always have access to your apps and extensions.

To open the Chrome Web Store, launch the Chrome browser, click the new tab button, and then click **Chrome Web Store** on the frequently used websites list. You can also get to the store directly by <http://chrome.google.com/webstore>.




- To use the Web Store, you must have the latest version of the Chrome browser installed.
- Some items purchased from the Chrome Web Store may not work depending on your computer specifications.
- The Chrome Web Store items may or may not be free-of-charge. Confirm that an item is free-of-charge or not before you select or purchase it.
- You have to install an app or extension that is supported by the Chrome OS to use it. Before downloading it, check if it is supported by the operating system.


Using Play Store

You can purchase and install various Android apps with your Chromebook just as you would with other Android devices. Download useful apps from **Play Store** to use your Chromebook more effectively.

Installing apps

1 Select  → **Play Store**.



If you cannot find **Play Store** on the Launcher, select the taskbar on the bottom right and select  → **TURN ON** under **Google Play Store**.


2 Browse apps by category or search for apps by keyword.

3 Select an app to view information about it.

4 Select **INSTALL** to download free apps. To purchase and download apps where charges apply, select the price and follow the instructions.




- Some apps may not be compatible with your Chromebook.
- If you want to use apps that you have previously purchased through the Play Store, download them again. Your Chromebook does not automatically download your apps from the Play Store.

5 The downloaded apps will be installed on the Launcher. If you cannot find the apps, select  on the Launcher.

FAQ

Printing on a Chromebook

If you are using the standard printer, add the printer on the Chromebook Settings screen.

Select the taskbar on the bottom right and select  → **Advanced** → **Printers** → **ADD PRINTER**, enter the printer's information, and then follow the on-screen instructions to proceed with printer set up.

For more information about the printing service, please refer to https://support.google.com/chromebook/answer/7225252?hl=en&ref_topic=3399712.

Recovery (optional)

Using the Recovery function, you can restore your computer when a problem occurs with your computer.

You can restore your computer after creating an update image and using a USB flash drive. For more information, refer to the **Recover your Chromebook** (<https://support.google.com/chromebook/answer/1080595>).



If you restore the Chromebook using a restore image, all the data saved on the Chromebook will be deleted.

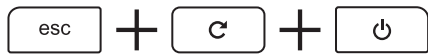
Performing the Update from a USB Flash Drive

- 1 Save the recovery image to be updated onto the SD card or USB flash drive.



For the procedures to save a recovery image onto the SD card or USB flash drive, refer to the **Recover your Chromebook** (<https://support.google.com/chromebook/answer/1080595>).

- 2 Open the LCD panel and press the power button to turn the power off.
- 3 Insert the SD card or the USB flash drive containing the recovery image, and press both the Refresh button and the Power button while holding down the ESC key.






- 4 When the Chromebook restarts, follow the onscreen instructions to complete the recovery process.
- 5 Remove the SD card or the USB flash drive as instructed.
- 6 When the system has restarted, the update is successfully completed.

Settings & Upgrade

LCD brightness

Adjust the LCD brightness to reduce eye strain and save power.

- Adjust the LCD brightness by pressing the  key to decrease brightness or the  key to increase brightness.
- Whenever you press the  key, the LCD brightness increases by one level.



LCD bad pixels principle of computer

Samsung observes the specifications regarding strict quality and reliability of LCD. But in spite of that, it is inevitable that there might be a small number of bad pixels. A large number of bad pixels can cause problems in appearance, but a small number of pixels doesn't affect the computer performance.

Therefore Samsung observes and manages the following dot principles:

- Bright dot: 2 or less
- Black dot: 4 or less
- Combination of Bright and Dark: 4 or less



Instructions for Cleaning the LCD

Clean the LCD panel with a soft cloth lightly moistened with computer cleansing detergent moving in one direction.

Cleaning the LCD panel with excessive force can damage the LCD.

Volume

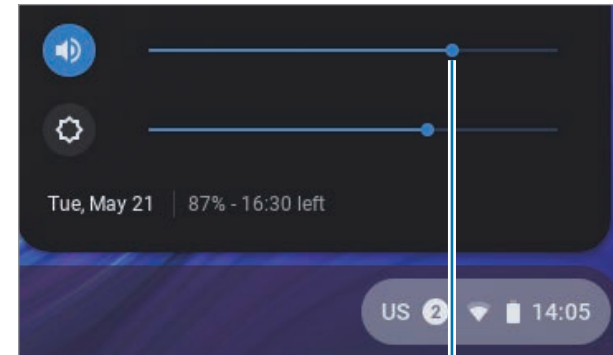
Adjust the system volume or sound volume when playing music or video.

Controlling volume using the keyboard

Press the Volume button on the right side of the computer to adjust the volume.

Controlling volume using the taskbar

- 1 Select the taskbar on the bottom right.
- 2 Drag the adjustment bar to the desired volume.



Volume adjustment bar

Battery

Fully charge the battery using the AC adapter before using the computer for the first time.



- Use only Samsung-approved AC adapters, batteries, and cables. If you use unapproved adapters, the battery cannot be charged or it may explode or damage the computer.
- Incorrectly connecting the charger may cause serious damage to the computer.
- This computer is equipped with an internal battery. The battery is not user-serviceable or user-replaceable.
- To safely remove or replace the battery, take the device to a Samsung Service Center. You will be charged for this service.
- You can use the computer while it is charging, but the battery charging time may increase. If the battery temperature rises too much, the charging may stop as a safety measure.



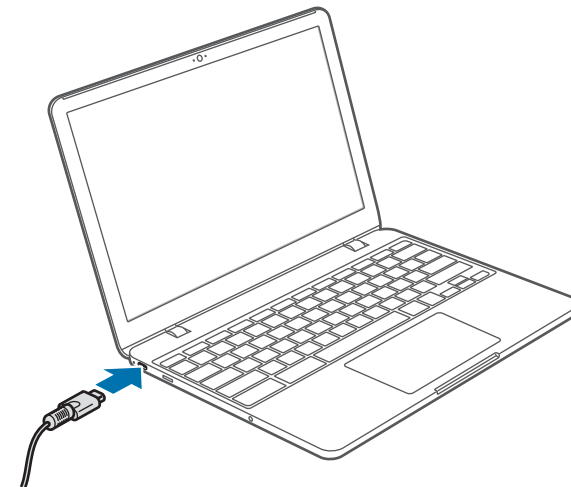
To restore the battery power after cutting it, connect the AC adapter.

Charging the battery



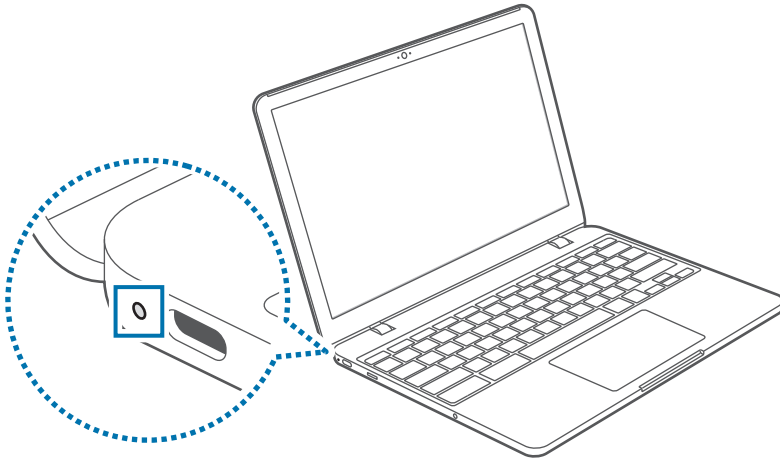
Fully charge the battery using the AC adapter before using the computer for the first time, or when the computer is completely discharged.

- 1 Connect the AC adapter to the USB-C® port of the computer.



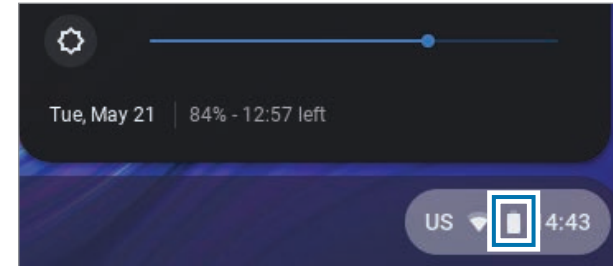
- 2 Plug the AC adapter into an electric socket.

- 3 When the battery is fully charged, the operating status LED turns green. Disconnect the AC adapter from the computer.



Battery status

Select the taskbar on the bottom right to view the current battery charge.



Battery usage time

Batteries are replaceable items and over time the battery's capacity to hold a charge and its power level is reduced. If a battery can only hold its charge for half of the time that it could when new, it is recommended to purchase a new, replacement battery.

Operating status LED	Status
	• Blinks red: Pre-charging
	• Red: Charging
	• Green: Fully charged
	• Blue: Turned on

- 4 Unplug it from the electric socket.

Appendix

Product specifications

The system specifications may differ depending on the derived model. For detailed system specifications, refer to the product catalog.

Item	Specification
Operating environment	<ul style="list-style-type: none">• Temperature: -5–40 °C for storage, 10–35 °C when operating• Humidity: 5–90 % for storage, 20–80 % when operating
AC/DC rating	<ul style="list-style-type: none">• Input: 100–240 VAC, 50–60 Hz• Output: 15 VDC, 2 A / 9 VDC, 3 A / 5 VDC, 3 A
PC rating	<ul style="list-style-type: none">• 15 VDC, 2 A / 9 VDC, 3 A / 5 VDC, 3 A (30 W)

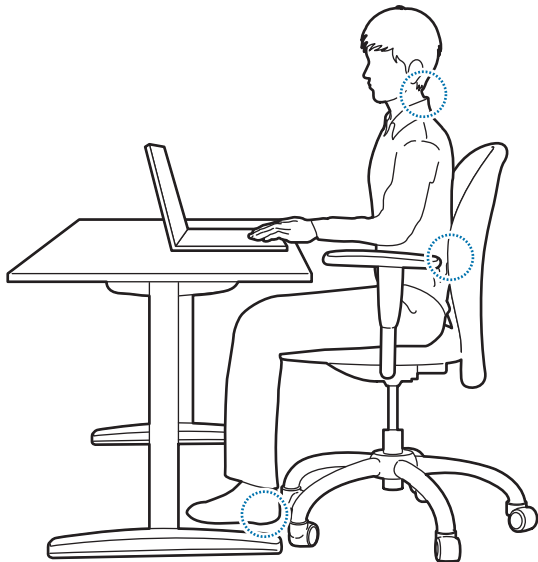


- Optional components may not be provided or different components may be provided depending on the model.
- The system specifications are subject to change without notice.
- Due to this computer's design, the memory or any additional storage space cannot be replaced or upgraded.

Ergonomic tips

Maintaining proper posture during computer use is very important to prevent physical injury. Improper or prolonged keyboard use may result in repetitive strain injury. Viewing the monitor screen for extended periods of time may result in eye strain. Therefore, please follow these guidelines carefully when setting up and using the computer.

Back and neck

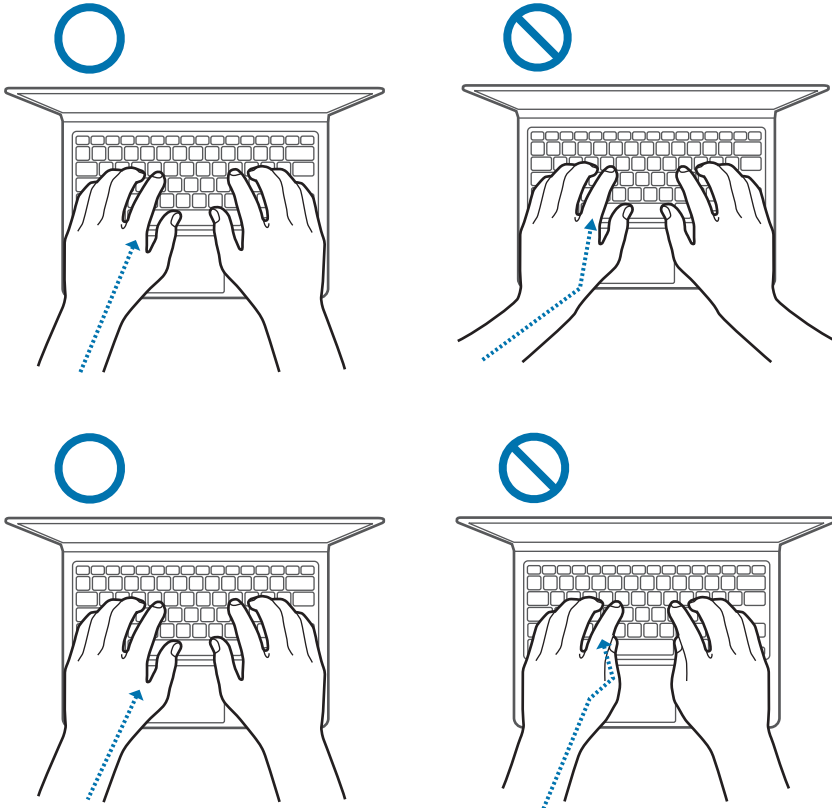


- Use an adjustable chair with firm, comfortable support.
- Adjust the height of your chair so that thighs are horizontal to the floor and feet are flat on the floor.
- The back of the chair should support the lower back. Adjust the backrest to fit your body properly.
- Sit back fully in your chair and straighten the back and neck. Avoid leaning forward or craning your neck toward the computer screen.
- Avoid using the computer while lying down or on your lap. If the computer's temperature increases, there is a danger of burn injury.



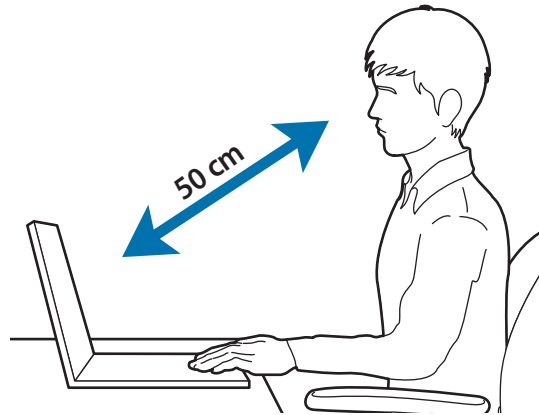
- The instructions in this manual have been prepared so that they can be applied to the range of needs of general users. If the user is not included in the range, the recommendations should be applied according to the user's needs.
- Images may differ from actual products.

Arms and hands



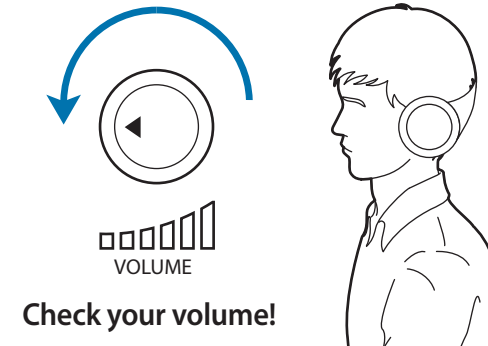
- When using the keyboard and touchpad, the shoulders should be relaxed. The upper arm and forearm should form an angle that is slightly greater than a right angle, with the wrist and hand in almost a straight line.
- Use a light touch when typing or using the touchpad and keep the hands and fingers relaxed. Avoid rolling the thumbs under your palms or supporting the wrists on the desk while typing.
- Use an external keyboard and mouse when using the computer for long periods. When using an external keyboard and mouse, position the devices at the same height as the computer and within comfortable reach.

Eye position and display illumination



- Position the screen at least 50 cm away from your eyes.
- Adjust the height of the screen so that its top edge is equal to or just below the level of your eyes.
- Avoid setting the screen's brightness settings excessively high.
- Keep the screen clean.
- If wearing glasses, clean them before using the computer.
- When referring to printed content while typing, use a static paper holder to hold the paper at about the same height as the monitor.

Hearing and volume control



- Ensure that the volume is not too loud before using a headset or earphones. Excessive exposure to loud sounds can cause hearing damage.
- Always turn the volume down before plugging the earphones into an audio source and use only the minimum volume setting necessary to hear your conversation or music.
- Avoid using earphones for long periods of time.
- Default audio settings can be changed by software and driver updates without your knowledge. Always recheck equalizer and volume settings before listening to audio.
- To prevent possible hearing damage, do not listen at high volume levels for long periods.



Operating conditions

- Take at least a 10 minute break every hour.
- Avoid using the computer in dark locations. Use the computer with as much ambient light as you would when reading a book.
- Indirect illumination is recommended. Use a curtain to prevent reflections and glare on the screen.
- While operating a computer and talking on a phone, use a headset. Using the computer while holding a phone on your shoulder or with your neck may lead to muscle strain or injury.
- Keep frequently used items within reach.
- Only use the computer within the temperature and humidity ranges specified in this manual.

Use caution when exposed to flashing lights.

- While using your computer, leave some lights on in the room and do not hold the screen too close to your eyes.
- Seizures or blackouts can occur when you are exposed to flashing lights while watching videos or playing Flash-based games for extended periods. If you feel any discomfort, stop using the computer immediately.

- If anyone related to you has experienced seizures or blackouts while using a similar product, consult a physician before using the computer.
- If you feel discomfort, such as a muscle spasm, or disoriented, stop using the computer immediately and consult a physician.
- To prevent eye strain, take frequent breaks while using the computer.

Reduce the risk of repetitive motion injuries.

When you repetitively perform actions, such as pressing keys, drawing characters on a touch screen with your fingers, or playing games, you may experience occasional discomfort in your hands, neck, shoulders, or other parts of your body. When using your computer for extended periods, hold the computer with a relaxed grip, press the keys lightly, and take frequent breaks. If you continue to have discomfort during or after such use, stop using the computer and consult a physician.

Safety precautions

For your safety and security and to prevent damage, carefully read the following safety instructions. This 'Safety precautions' relate to computer use. Some of the content may not be applicable to your computer.



- Since this is commonly applied to Samsung Computers, some pictures may differ from actual products.
- The product mentioned in this guide refers to all items supplied with the computer including the battery, the AC adapter, and all other Samsung-provided accessories.



Warning

Failure to follow the instructions marked with this symbol may result in physical injury or fatality.

Power related

Handle the power cord with care.

- Do not touch with wet hands.
- Do not use a damaged power cord.
- Do not overload a multi-outlet or an extension cord beyond the specified voltage/current capacity.
- Firmly insert the power cable into the AC adapter.
- Do not unplug the power cord by pulling on the cable.
- Unplug the wall-mount AC adapter (integrated plug and power adapter) from the wall outlet while holding the body and pulling it in the direction of the arrow.

Failure to do so may result in electric shock or fire.

Connect the power cord to the AC adapter firmly.

An improper connection may result in a fire.

Use the approved adapter or cable included in the product box.

If you use the unapproved adapter or cable, it cause the damage or malfunction of the computer.

Use only properly earthed electric sockets or extension cords.

Unearthed electric sockets or extension cords may cause electric shock. Any connection to unearthed electric sockets or extension cords may produce an electric field from a current leak.

If water or other substances enter the product, disconnect the power cable and contact a Samsung Service Center. For notebook computers that are supplied with an optional removable battery, disconnect the battery.

Failure to do so may result in electric shock or fire due to computer malfunction.

Do not let dust accumulate on the power cord or the electric socket. Regularly wipe the power cord and the electric socket with a dry cloth.

Failure to do so may result in electric shock or fire.

Do not bend or damage the power cable or the AC adapter with a heavy or sharp-edged object.

A damaged cable or cord may result in electric shock or fire.

Keep the battery, AC adapter, and power cord away from infants, children, and pets.

Failure to do so may result in electric shock or damage.

Battery usage related

Use manufacturer-approved batteries, chargers, accessories, and supplies.

- Using generic batteries or chargers may shorten the life of your product or cause the computer to malfunction. They may also cause a fire or cause the battery to explode.
- Use only Samsung-approved battery and charger specifically designed for your device. Incompatible battery and charger can cause serious injuries or damage to your device.
- Samsung cannot be responsible for the user's safety when using accessories or supplies that are not approved by Samsung.

Take care to not allow metal objects such as a key or clip to touch the battery terminal (metal parts).

This may cause excessive current and result in fire, burns, or damage to the battery.

If the computer or the computer battery leaks, emits strange odors, or swells, immediately stop using the computer and contact a Samsung Service Center.

Failure to do so may result in an explosion or fire.

Replace a run-down battery with a new, Samsung-approved battery.

Dispose of worn-out batteries properly.

- There is a danger of fire or explosion.
- The battery disposal method may differ depending on your country and region. Dispose of the used battery in an appropriate way.

When removing the real time clock (RTC) battery, keep it away from infants and children.

If a child swallows the battery, the child may suffocate. If this happens, immediately contact a doctor.

Do not throw or disassemble the battery and do not put it into water.

There is a danger of injury, fire or explosion.

Charge the battery according to the instructions in the manual.

Failure to do so may cause an explosion or fire.

Usage related

Do not use the computer on heated floors or electric pads, or on beds, blankets, or cushions that block the ventilation of the computer.

A blocked vent causes the computer to overheat, resulting in an explosion, fire, burns, or computer malfunction.

Do not use the computer in hot or humid locations, such as a bathroom, sauna, or inside a car during summer.

Failure to do so may result in computer malfunction or electric shock.

The computer can be used in locations with an ambient temperature of 10 °C to 35 °C and a relative humidity of 20 % to 80 %RH.

To avoid suffocation, keep the plastic bag away from infants and children.

Putting a plastic bag over the head may result in suffocation.

Never heat the computer (or the battery) or put the computer (or the battery) into a fire or microwave.

Failure to do so may result in an explosion or fire.

Before cleaning the computer, disconnect all the cables that are connected to the computer. For notebook computers that are supplied with an optional removable battery, disconnect the battery.

Failure to do so may result in electric shock or fire.

Keep the computer away from water or liquid.

Water or liquid entering the computer may short-circuit the computer, resulting in electric shock or fire.

If the computer is dropped or broken, disconnect the power cord and contact a Samsung Service Center. For notebook computers that are supplied with an optional removable battery, disconnect the battery.

Using a broken computer may result in electric shock or fire.

Do not touch the computer's surface or the vents for extended periods while the computer is on.

Contact with the vent or the surface for extended periods may result in low-temperature burns, such as redness on the skin.

Do not carry your device in your back pockets.

- The device may be damaged, explode, or result in a fire if too much pressure is applied to it.
- You may be injured if you are bumped or fall.



Failure to follow instructions marked with this symbol may result in minor physical injury or damage to the computer.

Installation related

Do not block the ports (holes), vents, etc. of the product and do not insert objects.

Damage to a component within the computer may cause electric shock or fire.

When using the computer on its side, ensure the vents are clear and facing upwards.

Failure to do so, may cause the internal temperature of the computer to rise and the computer to malfunction or halt.

Keep the computer's vents at least 15 cm away from walls and other objects.

Failure to do so may result in physical injury.

Do not place or use the computer on slanted or vibrating surfaces.

Failure to do so may result in computer malfunction or damage.

Do not place heavy objects on the product.

This may cause a problem with the computer. In addition, the object may fall and cause injury or damage the computer.

Properly shut down, disconnect and secure the computer cables before moving it.

Failure to do so may damage the computer or cause someone to trip over a loose cable.

Usage related

Do not use the pen for unintended purposes, such as poking the body like eyes or ears, and do not put it in your mouth.

Doing so may result in physical injury.

Do not place a candle, lit cigar, etc., over or on the product.

There is a danger of fire.

Make sure to have the product tested by a safety service engineer after repairing the product.

Using a repaired product without testing it for safety may cause an electric shock or fire.

In case of lightning, immediately turn the system off, then disconnect the power cord from the wall outlet and phone line from modem.

There is a danger of electric shock or fire.

Connect only permitted devices to the connectors or ports of the computer.

Failure to do so may result in an electric shock or fire.

Close the LCD panel only after checking if the notebook computer is turned off.

The temperature may rise and it may cause deformation of the product.

Do not press the eject button while the CD-ROM drive is in operation.

You might lose data and the disc might be suddenly ejected and could cause an injury.

Do not drop or hit the computer against anything.

Failure to do so may result in physical injury or computer malfunction.

When handling computer parts, follow the instructions on the manual supplied with the parts.

Failure to do so may result in damage to the product.

If the product emits smoke or there is a burning smell, disconnect the power plug from the wall outlet and contact a Samsung Service Center immediately. For notebook computers that are supplied with an optional removable battery, disconnect the battery.

There is a danger of fire.

Do not store your device near or in heaters, microwaves, hot cooking equipment, or high pressure containers.

- The battery may leak.
- Your device may overheat and cause a fire.

Do not use damaged or illegally modified CDs.

There is a danger of damaging the product or personal injury.

Do not insert your fingers into the ports (holes), card slot, or vents.

There is a danger of injury or electric shock.

Use recommended computer cleansing solutions when cleaning the product and only use the computer when it is completely dry.

Failure to do so may result in electric shock or fire.

You should not use a paper clip to perform an emergency disc ejection while the disc is in motion. Make sure to use the emergency disc eject method only when the Optical Disc Drive has stopped.

There is a danger of injury.

Do not place your face close to the Optical Disc Drive tray when it is operating.

There is a danger of injury due to an abrupt ejection.

Do not use the product if it is cracked or broken.

Broken glass or acrylic could cause injury to your hands and face. Take the device to a Samsung Service Center to have it repaired.

When using wireless communication (LAN, Bluetooth, etc.) always follow applicable instructions. For example, airlines and hospitals have strict requirements.

Avoid exposing a drive to magnetic fields. Security devices with magnetic fields include airport walk-through devices and security wands. The airport security devices that check carry-on luggage use X-rays instead of magnetism and will not damage a drive.

Keep the computer away from magnetic material.

- Magnetic materials may cause computer malfunction or cause the battery to discharge.
- To avoid damaging the computer or magnetic stripe cards, such as credit cards, keep magnetic stripe cards away from the computer.

Do not use your computer in a hospital or on an aircraft that can be interfered with by radio frequency.

- Avoid using your computer within a 15 cm range of a pacemaker, if possible, as your computer can interfere with the pacemaker.
- To minimize possible interference with a pacemaker, use your computer only on the side of your body that is opposite the pacemaker.
- If you use medical equipment, contact the equipment manufacturer before using your computer to determine whether or not the equipment will be affected by radio frequencies emitted by the computer.
- When in a hospital, turn off your computer and follow all hospital regulations. Radio frequencies emitted from the computer may affect medical equipment.

Upgrade Related

Do not attempt to upgrade the computer, unless you are qualified. Otherwise, contact a Samsung Service Center or an authorized technician.

When you upgrade permitted devices, according to the manual, follow the specified instructions in the manual to upgrade them. Do not disassemble any other parts by yourself.

Failure to do so may result in computer malfunction, electric shock, or fire.

Take care when touching the product or parts.

The computer may be damaged or you may be injured.

Do not disassemble the power supply unit in any circumstances.

Failure to do so may result in electric shock, fire, or an explosion.

Shut down the computer and disconnect all cables before disassembling the computer. For notebook computers that are supplied with an optional removable battery, disconnect the battery.

Failure to do so may cause electric shock.

Make sure to close the computer cover before connecting the power after a reassembly.

There is a danger of electric shock if your body touches an internal part.

Never disassemble or repair the product by yourself.

There is danger of an accident. Use authorized Samsung Service Center.

To connect a device that is not manufactured or authorized by Samsung, enquire at a Samsung Service Center before connecting the device.

There is a danger of damaging the product.

Storage and movement related

Do not store the computer in an enclosed space, such as a computer bag, while it is running.

Failure to do so may result in fire. Completely shut down the computer before putting the computer into an enclosed space.

When carrying the notebook computer with other items, such as the adapter, mouse, books etc., take care not to press anything against the notebook computer.

If a heavy object is pressed against the notebook computer, a white spot or stain may appear on the LCD.

Do not operate or look at the computer while driving a vehicle.

There is a danger of a traffic accident. Please concentrate on driving.

For long periods of inactivity or storage, discharge the battery and separate it from the computer (for external or removable battery types).

Cautions on preventing data loss (storage device (e.g. HDD, SSD, eMMC) management)

Take care not to damage the data on a storage device (e.g. HDD, SSD, eMMC).

- Subjecting the device to physical impacts may result in data loss.
- Data may be lost when the computer is turned off or reset by a power failure while the storage device (e.g. HDD, SSD, eMMC) is operating.
- Data may be lost and irrecoverable due to a computer virus.
- Data may be lost if the power is turned off while running an application.
- Samsung is not liable for any loss of data on a storage device (e.g. HDD, SSD, eMMC).

To prevent data loss due to damage to a storage device (e.g. HDD, SSD, eMMC), please back up the data frequently.

LCD bad pixels

Samsung observes strict specifications regarding the quality and reliability of the LCD. However, there is a small chance that a few pixels may be bad. A large number of bad pixels can cause problems with the display, but a small number of bad pixels does not generally affect computer performance.

Samsung's quality standards for bad pixels are as follows:

- **Bright dot:** 2 or fewer
- **Black dot:** 4 or fewer
- **Combination (bright and dark):** 4 or fewer

Clean the LCD screen with a soft cloth dampened with computer cleansing detergent.

Do not use excessive force. Doing so may damage the LCD screen.

Important safety information

Safety instructions

The system is designed and tested to meet the latest standards for safety of information technology equipment. However, to ensure safe use of this product, it is important that the safety instructions marked on the product and in the documentation are followed.



Always follow these instructions to help guard against personal injury and damage to the system.

Setting up the system

- Read and follow all instructions marked on the product and in the documentation before operating the system. Retain all safety and operating instructions for future use.
- Do not use this product near water or a heat source such as a radiator.
- Set up the system on a stable work surface.
- The product should be operated only with the type of power source indicated on the rating label.
- Ensure that the electrical outlet to power the equipment is easily accessible in case of fire or short circuit.
- If the computer has a voltage selector switch, make sure that the switch is in the proper position for your area.
- Openings in the computer case are provided for ventilation. Do not block or cover these openings. Make sure you provide adequate space, at least 6 inches (15 cm), around the system for ventilation when setting up your work area. Never insert objects of any kind into the computer ventilation openings.

- Ensure that the fan vents on the bottom of the casing are clear at all times. Do not place the computer on a soft surface, doing so will block the bottom vents.
- When using an extension cord with this system, make sure that the total power rating on the products plugged into the extension cord does not exceed the extension cord power rating.
- For computers with glossy display bezels the user should consider the placement of the computer as the bezel may cause reflections from surrounding light and bright surfaces.

Care during use

- Do not walk on the power cord or allow anything to rest on it.
- Do not spill anything on the computer or its components. The best way to avoid spills is to not eat or drink near the computer or its components.
- Some products have a replaceable CMOS battery on the system board. There is a danger of explosion if the CMOS battery is replaced incorrectly. Replace the battery with the same or equivalent type recommended by the manufacturer. Dispose of batteries according to the manufacturers instructions. If the CMOS battery requires replacement ensure that a qualified technician performs the task.
- When the computer is turned off, a small amount of electrical current still flows through the computer.
To avoid electrical shock, always unplug all power cables, remove the battery and modem cables from the wall outlets before cleaning the system.

- Unplug the system from the wall outlet and contact a Samsung Service Center if:
 - The power cord or plug is damaged.
 - Liquid has been spilled into the computer.
 - The computer does not operate properly when the operating instructions are followed.
 - The computer was dropped or the casing is damaged.
 - The computer performance changes.

Operating instructions

- 1 When installing and operating devices please refer to safety requirements in the user manual.
- 2 Devices can be used only with the equipment specified in the technical specifications of the devices.
- 3 If any smell of burning or smoke is detected from the computer the unit should be switched off and the battery removed. The unit should be checked by a qualified technician before reuse.
- 4 Service and repair of devices should be carried out by authorized service centers.
- 5 Do not allow the portable computer to operate with the base resting directly on exposed skin for extended periods of time. The surface temperature of the base will rise during normal operation (particularly when AC Power is present). Allowing sustained contact with exposed skin can cause discomfort or eventually a burn.

Replacement parts and accessories

Use only replacement parts and accessories recommended by manufacturer.



To reduce the risk of fire, use only No. 26 AWG or larger telecommunications line cord.



Do not use this product in areas classified as hazardous. Such areas include patient care areas of medical and dental facilities, oxygen rich environments, or industrial areas.

Battery disposal



Do not put rechargeable batteries or products powered by non-removable rechargeable batteries in the garbage.

Contact the Samsung Service Center for information on how to dispose of batteries that you cannot use or recharge any longer. Follow all local regulations when disposing of old batteries.



THERE IS RISK OF EXPLOSION IF BATTERY IS REPLACED BY AN INCORRECT TYPE.

DISPOSE OF USED BATTERIES ACCORDING TO THE INSTRUCTIONS.

Laser safety

All systems equipped with CD or DVD drives comply with the appropriate safety standards, including IEC 60825-1. The laser devices in these components are classified as “Class 1 Laser Products” under a US Department of Health and Human Services (DHHS) Radiation Performance Standard. Should the unit ever need servicing, contact an authorized service location.



- **Laser Safety Note:** Use of controls or adjustments or performance of procedures other than those specified in this manual may result in hazardous radiation exposure. To prevent exposure to laser beams, do not try to open the enclosure of a CD or DVD drive.
- Class 1M laser radiation when operating part is open. Do not view directly with optical instruments.
- Class 3B invisible laser radiation when open. Avoid exposure to the beam.

Connecting and disconnecting the AC adapter

The socket-outlet shall be installed near the equipment and shall be easily accessible.

Do not unplug the power cord by pulling the cable only.

Power cord requirements

The power cord set (all plug, cable and AC adapter plug) you received with your computer meets the requirements for use in the country where you purchased your equipment.

Power cord sets for use in other countries must meet the requirements of the country where you use the computer. For more information on power cord set requirements, contact your authorized dealer, reseller, or service provider.

General requirements

The requirements listed below are applicable to all countries:

- All power cord sets must be approved by an acceptable accredited agency responsible for evaluation in the country where the power cord set will be used.
- The power cord set must have a minimum current capacity of 7A and a nominal voltage rating of 125 or 250 volts AC, as required by each country's power system (USA only).
- The appliance coupler must meet the mechanical configuration of an EN 60 320/IEC 320 Standard Sheet C7 (or C5) connector, for mating with appliance inlet on the computer.

Regulatory compliance statements

Wireless guidance

(If fitted with 2.4 G band or 5 G band)

Low power, Radio LAN type devices (radio frequency (RF) wireless communication devices), operating in the 2.4 GHz/5 GHz Band, may be present (embedded) in the notebook system. The following section is a general overview of considerations while operating a wireless device.

Additional limitations, cautions, and concerns for specific countries are listed in the specific country sections (or country group sections). The wireless devices in the system are only qualified for use in the countries identified by the Radio Approval Marks on the system rating label. If the country you will be using the wireless device in, is not listed, please contact your local Radio Approval agency for requirements. Wireless devices are closely regulated and use may not be allowed.

The RF field strength of the wireless device or devices that may be embedded in the notebook are well below all international RF exposure limits as known at this time. Because the wireless devices (which may be embedded into the notebook) emit less energy than is allowed in radio frequency safety standards and recommendations, manufacturer believes these devices are safe for use. Regardless of the power levels, care should be taken to minimize human contact during normal operation.

Some circumstances require restrictions on wireless devices.

Examples of common restrictions are listed on the next page:



- Radio frequency wireless communication can interfere with equipment on commercial aircraft. Current aviation regulations require wireless devices to be turned off while traveling in an airplane.

802.11ABGN (also known as wireless Ethernet or Wi-Fi) and Bluetooth communication devices are examples of devices that provide wireless communication.

- In environments where the risk of interference to other devices or services is harmful or perceived as harmful, the option to use a wireless device may be restricted or eliminated. Airports, hospitals, and oxygen or flammable gas laden atmospheres are limited examples where use of wireless devices may be restricted or eliminated. When in environments where you are uncertain of the sanction to use wireless devices, ask the applicable authority for authorization prior to use or turning on the wireless device.

- Every country has different restrictions on the use of wireless devices. Since your system is equipped with a wireless device, when traveling between countries with your system, check with the local Radio Approval authorities prior to any move or trip for any restrictions on the use of a wireless device in the destination country.
- If the system came equipped with an internal embedded wireless device, do not operate the wireless device unless all covers and shields are in place and the system is fully assembled.
- Wireless devices are not user serviceable. Do not modify them in any way. Modification to a wireless device will void the authorization to use it. Please contact the manufacturer for service.
- Only use drivers approved for country in which the device will be used. See the manufacturer System Restoration Kit, or contact the manufacturer's technical support for additional information.

United States of America

USA and Canada Safety Requirements and Notices

Do not touch or move antenna while the unit is transmitting or receiving.

Do not hold any component containing the radio such that the antenna is very close to touching any exposed parts of the body, especially the face or eyes, while transmitting.

Do not operate the radio or attempt to transmit data unless the antenna is connected; if not, the radio may be damaged.

Use in specific environments:

The use of wireless devices in hazardous locations is limited by the constraints posed by the safety directors of such environments.

The use of wireless devices on airplanes is governed by the Federal Aviation Administration (FAA).

The use of wireless devices in hospitals is restricted to the limits set forth by each hospital.



Explosive Device Proximity Warning

Do not operate a portable transmitter (such as a wireless network device) near unshielded blasting caps or in an explosive environment unless the device has been modified to be qualified for such use.



Use On Aircraft Caution

Regulations of the FCC and FAA prohibit airborne operation of radio-frequency wireless devices because their signals could interfere with critical aircraft instruments.

Other wireless devices

Safety notices for other devices in the wireless network:

Refer to the documentation supplied with wireless Ethernet adapters or other devices in the wireless network.



The Part 15 radio device operates on a non-interference basis with other devices operating at this frequency. Any changes or modification to said product not expressly approved by Intel could void the user's authority to operate this device.

Unintentional emitter per FCC Part 15

Responsible Party – U.S. Contact Information

Samsung Electronics America, Inc.

85 Challenger Road.

Ridgefield Park, NJ 07660

Phone: 1-800-SAMSUNG (726-7864)

This device complies with Part 15 of the FCC Rules. Operation is subject to the following two conditions: (1) this device may not cause harmful interference, and (2) this device must accept any interference received, including interference that may cause undesired operation.



This equipment has been tested and found to comply with the limits for a Class B digital device pursuant to Part 15 of the FCC Rules. These limits are designed to provide reasonable protection against harmful interference in a residential installation. This equipment generates, uses, and can radiate radio frequency energy. If not installed and used in accordance with the instructions, it may cause harmful interference. If this equipment does cause harmful interference to radio or television reception, which can be determined by turning the equipment off and on, the user is encouraged to try to correct the interference by one or more of the following measures:

- Reorient or relocate the receiving antenna.
- Increase the separation between the equipment and receiver.
- Connect the equipment into an outlet on a circuit different from that to which the receiver is connected.
- Consult the dealer or an experienced radio/TV technician for help.

If necessary, the user should consult the dealer or an experienced radio/television technician for additional suggestions. The user may find the following booklet helpful: "Something About Interference."

This is available at FCC local regional offices. Our company is not responsible for any radio or television interference caused by unauthorized modifications of this equipment or the substitution or attachment of connecting cables and equipment other than those specified by our company. The correction will be the responsibility of the user. Use only shielded data cables with this system.

Intentional emitter per FCC Part 15

(If fitted with 2.4 G band or 5 G band)

Low power, Radio LAN type devices (radio frequency (RF) wireless communication devices), operating in the 2.4 GHz/5 GHz Band, may be present (embedded) in the notebook system. This section is only applicable if these devices are present. Refer to the system label to verify the presence of wireless devices.

Wireless devices that may be in the system are only qualified for use in the United States of America if an FCC ID number is on the system label.

This device is restricted to indoor use due to its operation in the 5.15 to 5.25 GHz frequency range. FCC requires this product to be used indoors for the frequency range 5.15 to 5.25 GHz to reduce the potential for harmful interference to co-channel Mobile Satellite systems. High power radars are allocated as primary users of the 5.25 to 5.35 GHz and 5.65 to 5.85 GHz bands. These radar stations can cause interference with and/or damage this device.

Operation of this device is subject to the following two conditions:

(1) This device may not cause harmful interference, and (2) this device must accept any interference received, including interference that may cause undesired operation of the device.



Wireless devices are not user serviceable. Do not modify them in any way.

Modification to a wireless device will void the authorization to use it. Contact manufacturer for service.

Health and safety information

Exposure to Radio Frequency (RF) Signals Certification Information

This product can contain an embedded radio transmitter and receiver. It is designed and manufactured not to exceed the exposure limits for radio frequency (RF) energy set by the Federal Communications Commission (FCC) of the U.S. government. These FCC exposure limits are derived from the recommendations of two expert organizations, the National Council on Radiation Protection and Measurement (NCRP) and the Institute of Electrical and Electronics Engineers (IEEE). In both cases, the recommendations were developed by scientific and engineering experts drawn from industry, government, and academia after extensive reviews of the scientific literature related to the biological effects of RF energy.

Before a new model is available for sale to the public, it must be certified to the FCC that it does not exceed the exposure limit established by the FCC. Evaluation per each model is performed in positions and locations (e.g. at the bottom on the body) as required by the FCC.

For body worn operation, this model meets the FCC RF exposure guidelines when used with Samsung accessory designated for this product. Non-compliance with the above restrictions may result in violation of FCC RF exposure guidelines.

RF exposure or SAR information can be viewed on-line at www.fcc.gov/oet/ea/fccid/. This site uses this product FCC ID number on the outside of the product. Sometimes it may be necessary to remove the battery pack to find number. Once you have the FCC ID number for a particular product, follow the instructions on the website and it should provide RF exposure information or values for typical or maximum SAR for particular product.

For corresponding model only

The Specific Absorption Rate (SAR) is a measure of the rate of absorption of RF energy by the human body expressed in units of watts per kilogram (W/kg). The FCC wireless devices to comply with a safety limit of 1.6 watts per kilogram (1.6 W/kg).

SAR level of this device while operating can be well below the maximum value. This is because the device is designed to operate at multiple power levels so as to use only the power required to reach the network. In general, the closer you are to a wireless base station antenna, the lower the power output.

Manufacturer information

Samsung Electronics Co., Ltd.

129, Samsung-Ro, Yeongtong-Gu, Suwon-City, Gyeonggi-Do,
443-742, Korea

Samsung Electronics Suzhou Computer Co., Ltd.

No. 198, Fangzhou Road, Suzhou Industrial Park, Jiangsu Province,
215021, China

Tel: +86-512-6253-8988

Samsung Electronics Vietnam Co., Ltd.

Khu Cong nghiep Yen Phong 1, Yen Trung, Yen Phong, Bac Ninh,
Viet Nam

Tel: +84-222-369-6875

For the web or the phone number of the Samsung Service Center,
see the Warranty or contact the retailer where you purchased your
product.

RTC caution

CAUTION: Danger of explosion if battery is incorrectly replaced.
Replace only with the same or equivalent type recommended
by the manufacturer. Discard used batteries according to the
Manufacturer's instruction.

WEEE symbol information



Correct disposal of this product (Waste Electrical & Electronic Equipment)

■ (Applicable in countries with separate collection systems)

This marking on the product, accessories or literature indicates that the product and its electronic accessories (for example, charger, headset, USB cable) should not be disposed of with other household waste at the end of their working life.

To prevent possible harm to the environment or human health from uncontrolled waste disposal, please separate these items from other types of waste and recycle them responsibly to promote the sustainable reuse of material resources.

Household users should contact either the retailer where they purchased this product, or their local government office, for details of where and how they can take these items for environmentally safe recycling.

Business users should contact their supplier and check the terms and conditions of the purchase contract. This product and its electronic accessories should not be mixed with other commercial wastes for disposal.

For information on Samsung's environmental commitments and product regulatory obligations, e.g. REACH, WEEE or Batteries, visit our sustainability page available via www.samsung.com.

India only

For more information on safe disposal and recycling visit our website www.samsung.com/in or contact our Helpline numbers - 18002668282, 180030008282.

This product is RoHS compliant.



Correct disposal of batteries in this product

(Applicable in countries with separate collection systems)

This marking on the battery, manual or packaging indicates that the batteries in this product should not be disposed of with other household waste at the end of their working life. Where marked, the chemical symbols Hg, Cd or Pb indicate that the battery contains mercury, cadmium or lead above the reference levels in EC Directive 2006/66. If batteries are not properly disposed of, these substances can cause harm to human health or the environment.

To protect natural resources and to promote material re-use, please separate batteries from other types of waste and recycle them through your local, free battery return system.

PO BOX 12987, DUBLIN, IE

Removing the battery (Europe only)

- To remove the battery, contact an authorised service centre. To obtain battery removal instructions, please visit www.samsung.com/global/ecodesign_energy.
- For your safety, you **must not attempt to remove** the battery. If the battery is not properly removed, it may lead to damage to the battery and device, cause personal injury, and/or result in the device being unsafe.
- Samsung does not accept liability for any damage or loss (whether in contract or tort, including negligence) which may arise from failure to precisely follow these warnings and instructions, other than death or personal injury caused by Samsung's negligence.

USA only

This Perchlorate warning applies only to primary CR (Manganese Dioxide) Lithium coin cells in the product sold or distributed ONLY in California USA.

“Perchlorate Material- special handling may apply, see www.dtsc.ca.gov/hazardouswaste/perchlorate.”

Dispose unwanted electronics through an approved recycler.

To find the nearest recycling location, go to our website:

www.samsung.com/recycling or call, 1-800-SAMSUNG.

For battery recycling go to call2recycle.org; or call 1-800-822-8837.

Samsung package Take-Back program (USA only)

In partnering with select recyclers, Samsung offers packaging take-back at no cost to you.

Simply call the following number for the locations nearest you.

CRT Processing, LLC

(877) 278-0799

Kathy Severson – Logistics contact

Dispose unwanted electronics through an approved recycler.

To find the nearest recycling location, go to our website:

www.samsung.com/recycling or call, 1-800-SAMSUNG.

Some content may differ from the computer depending on the region, service provider, software version, or computer model, and is subject to change without prior notice.

SAMSUNG