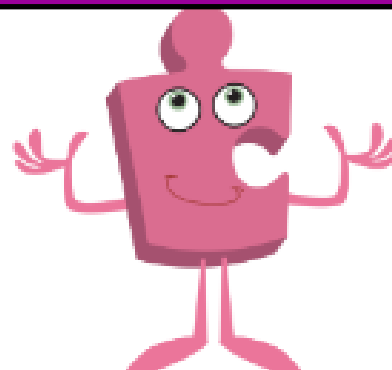




# JIGSAW PSHE Collectable Year 2

In this Puzzle we will talk about setting realistic goals and how we can achieve them. We will discuss perseverance when we find things difficult as well as recognising our strengths as a learner. We will talk about group work and reflect on who we work well with and who we don't. As a class we will talk about sharing success with other people.



## Questions for Family Learning

- What goals have you set at school?
- What goal would you like to set for home?
- What do you need to do achieve your goal?
- How do you feel when something is difficult?
- How do you feel when you have achieved a goal?
- How do you like to celebrate when you achieve something you are proud of?
- How can we celebrate each other's achievements at home?
- Does Jigsaw Jo help you learn?
- Do you have Pause Points with Jigsaw Jerrie Cat? Do these help you?

## Knowledge

- Know how to choose a realistic goal and think about how to achieve it
- Know that it is important to persevere
- Know how to recognise what working together well looks like
- Know what good group working looks like
- Know how to share success with other people



## Vocabulary

Realistic,  
Proud,  
Success,  
Celebrate,  
Achievement,  
Goal,  
Strength,  
Persevere,  
Challenge,  
Difficult,  
Easy,  
Learning Together,  
Partner,  
Team work,  
Product.