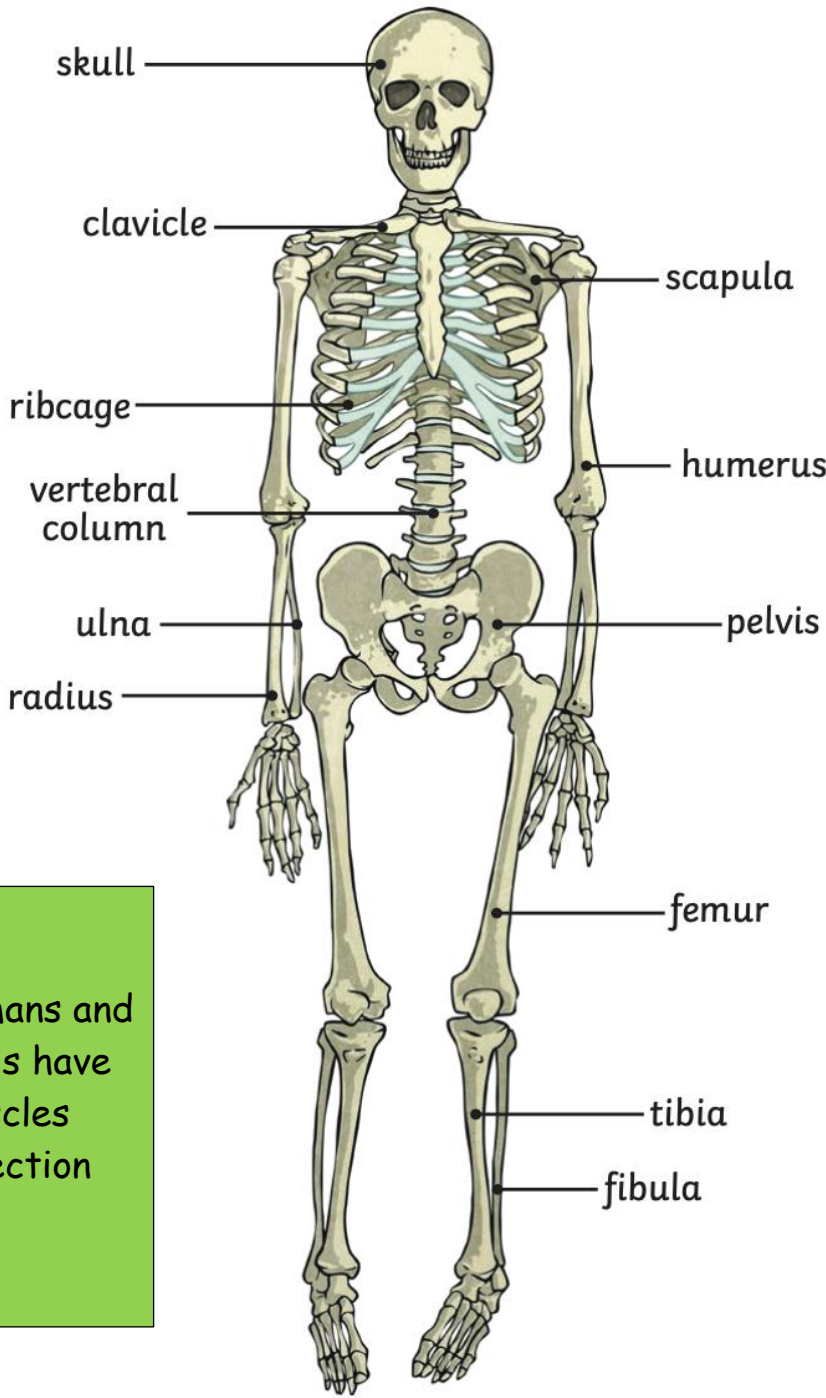


ANIMALS

KEY LEARNING:

Identify that animals, including humans, need the right types and amount of nutrition, and that they cannot make their own food; they get nutrition from what they eat

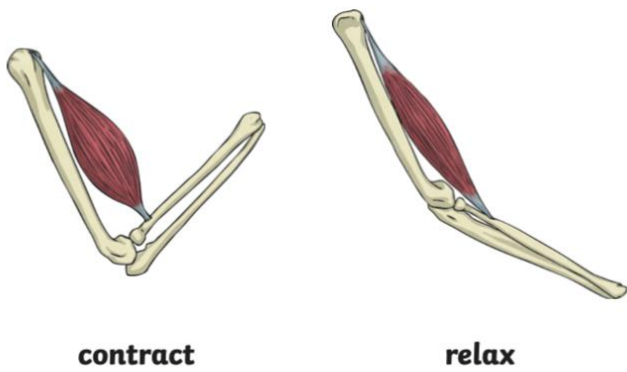
Nutrient	Found in... (examples)	What it does/they do
carbohydrates		provide <b>energy</b>
protein		helps growth and repair
fibre		helps you to digest the food that you have eaten
fats		provide <b>energy</b>
vitamins		keep you <b>healthy</b>
minerals		keep you <b>healthy</b>
water		moves <b>nutrients</b> around your body and helps to get rid of waste



KEY LEARNING:

Identify that humans and some other animals have skeletons and muscles for support, protection and movement

Skeletal **muscles** work in pairs to move the bones they are attached to by taking turns to contract (get shorter) and relax (get longer).



Key Vocabulary

nutrition, nutrients, carbohydrates, sugars, protein, vitamins, minerals, fibre, fat, water, skeleton, bones, muscles, joints, support, protect, move, skull, ribs, spine

digestive system, digestion, mouth, teeth, saliva, oesophagus, stomach, small intestine, large intestine, rectum, anus, incisor, canine, molar, premolar, herbivore, carnivore, omnivore, producer, predator, prey

environment, habitat, human impact, positive, negative, migrate, hibernate

herbivore, carnivore, omnivore, producer, predator, prey

classification, classification keys



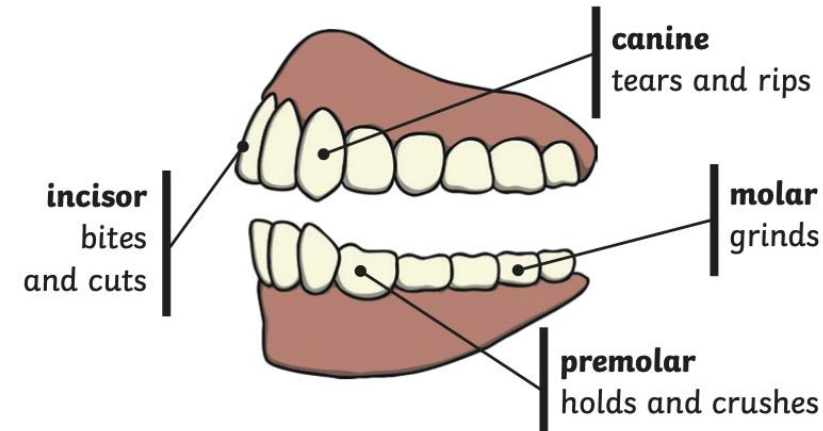
### KEY LEARNING:

Describe the simple functions of the basic parts of the digestive system in humans

Identify the different types of teeth in humans and their simple functions

Construct and interpret a variety of food chains, identifying producers, predators and prey.

### Human Teeth and Their Functions



Some people have wisdom teeth but they have no function now.

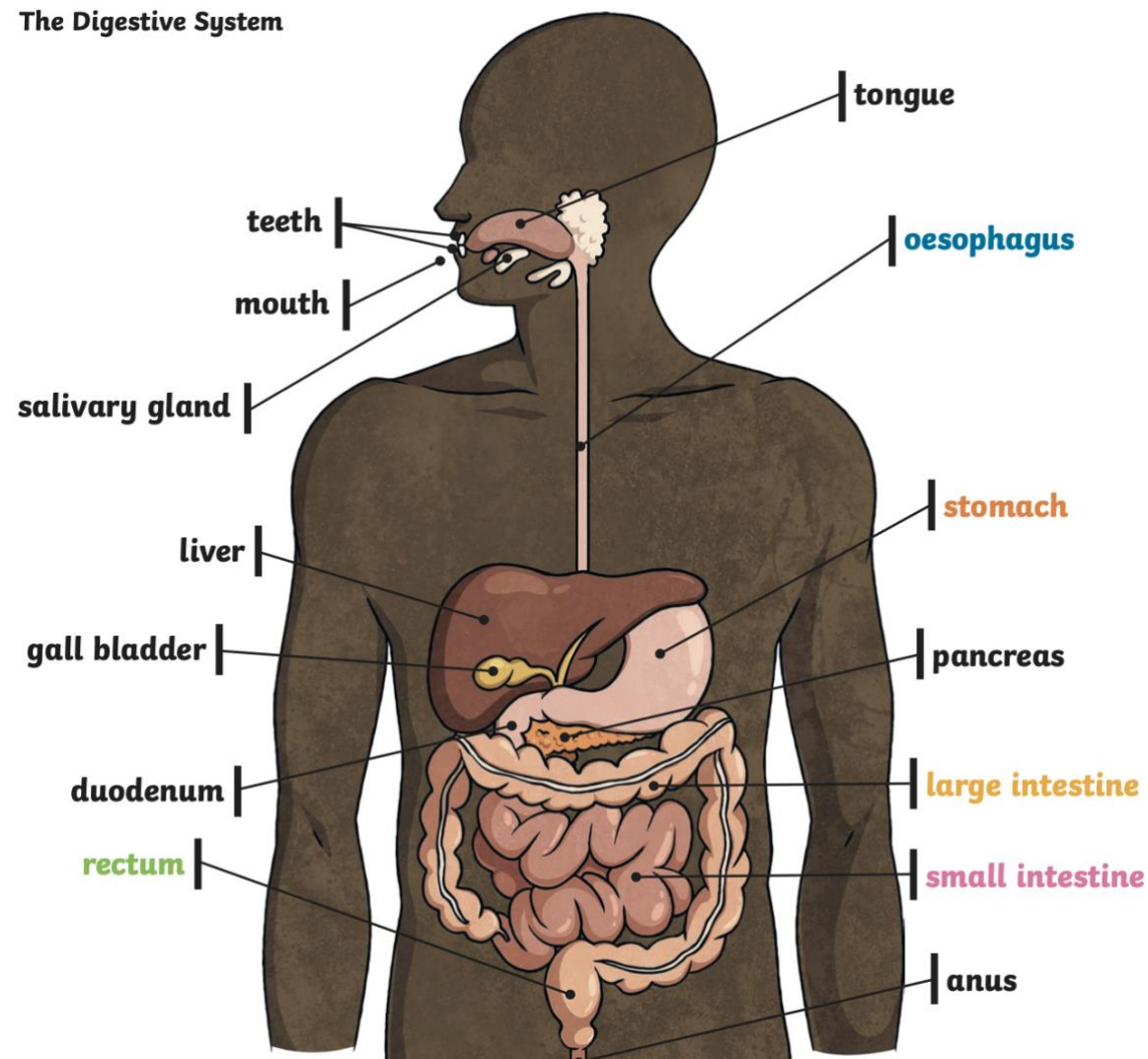
### KEY LEARNING:

Recognise that living things can be grouped in a variety of ways

Explore and use classification keys to help group, identify and name a variety of living things in their local and wider environment

Recognise that environments can change and that this can sometimes pose dangers to living things

### The Digestive System



Movement  
Respiration  
Sensitivity

Growth  
Reproduction  
Excretion  
Nutrition

### Example classification Key

