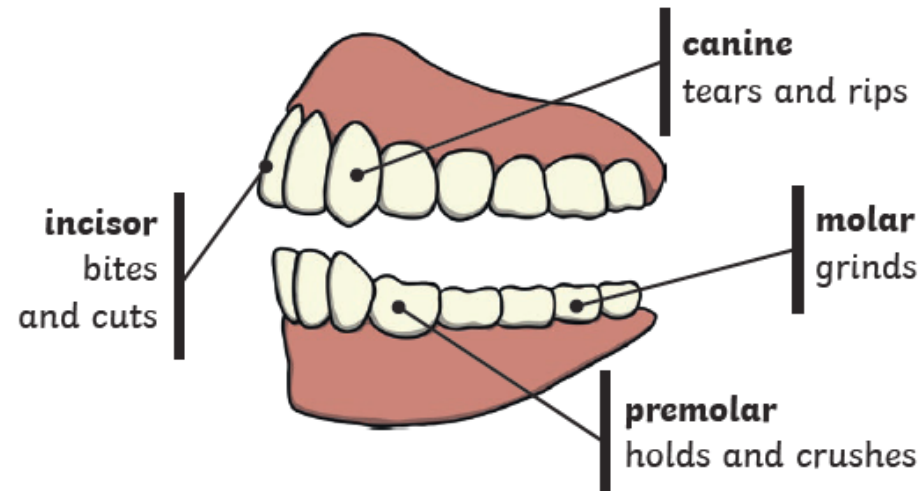


Human Teeth and Their Functions



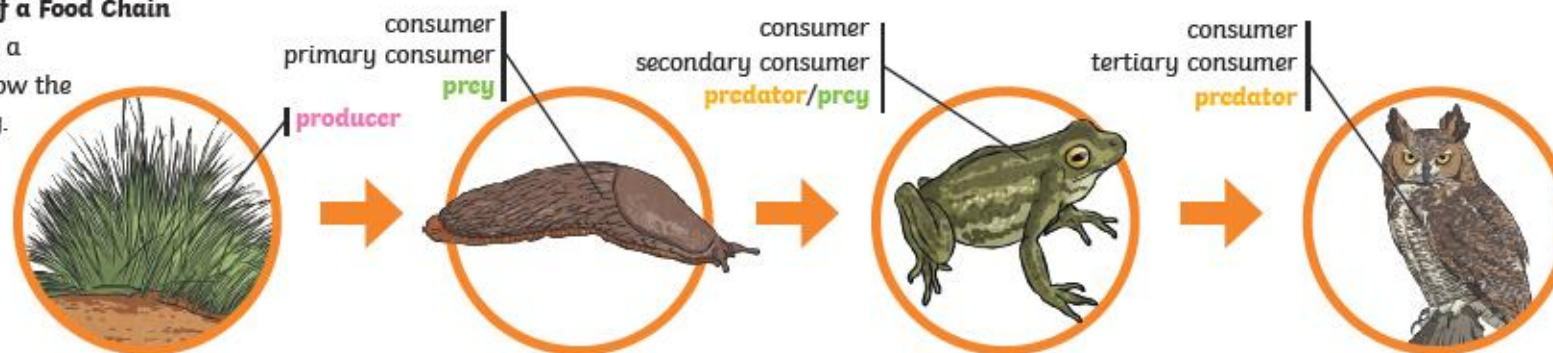
Some people have wisdom teeth but they have no function now.

Animals Including Humans

This unit focuses on the digestive system in humans and animals and the functions of teeth. Children will learn more about herbivores, carnivores and omnivores in the context of teeth, digestion and the food chain. In addition, they will extend their understanding of food chains to more complex chains and food webs.

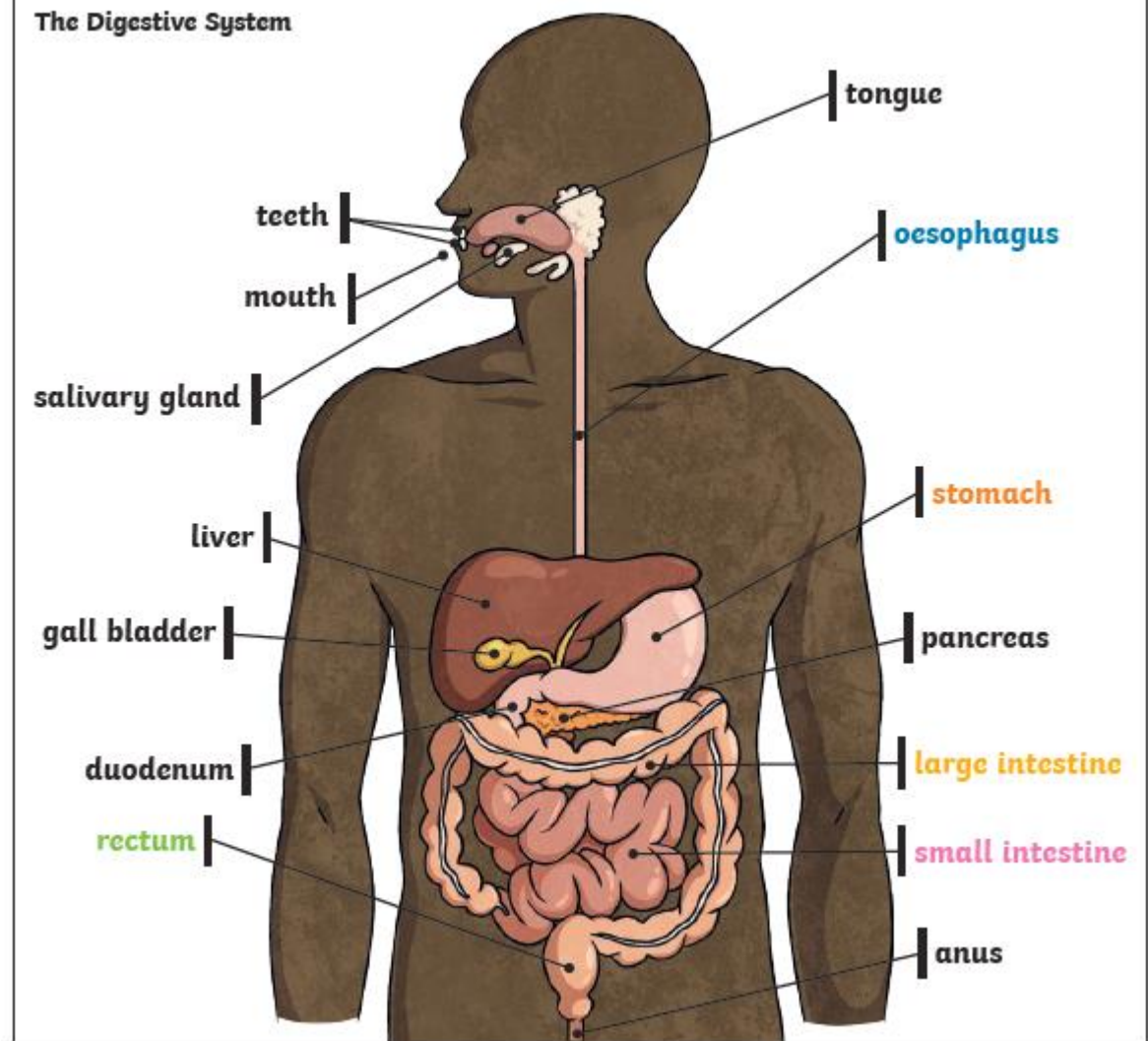
An Example of a Food Chain

The arrows in a food chain show the flow of energy.



Key Knowledge

The Digestive System



Key Vocabulary

digest	Break down food so it can be used by the body.
oesophagus	A muscular tube which moves food from the mouth to the stomach.
stomach	An organ in the digestive system where food is broken down with stomach acid and by being churned around.

small intestine	Part of the intestine where nutrients are absorbed into the body.
large intestine	Part of the intestine where water is absorbed from remaining waste food. Stools are formed in the large intestine.
rectum	Part of the digestive system where stools are stored before leaving the body through the anus.

Key Vocabulary

herbivore	An animal that eats plants.
carnivore	An animal that feeds on other animals.
omnivore	An animal that eats plants and animals.
producer	A plant that produces its own food.
predator	An animal that hunts and eats other animals.
prey	An animal that gets hunted and eaten by another animal.